



Volume 59 ◊ Number 11 ◊ November 2013 ◊ A monthly newsletter for and by the members of MAGS

Discovery Park of America

Opening November 1, 2013

Matthew Lybanon



Tennessee Governor Bill Haslam speaking at the sneak preview of Discovery Park of America on October 21, 2013.

When we visited Discovery Park of America 3 months ago (see the August issue of *MAGS Rockhound News*) we stepped over wires, walked around painters, saw empty display cases, and saw X's on the floor showing where exhibits would be located. A lot has

changed in just 3 months! We could not believe how much work was done in such a short time.

Carol and I were invited to attend a sneak preview on October 21. We made the 2-hour trip to Union City to see the new museum. *Continued, P. 3*

In this issue

Discovery Park of America	P. 1
Things You Can Find Around Memphis	P. 1
MAGS and Federation Notes	P. 2
Jonesboro Gravel Pit Field Trip	P. 4
SandFest	P. 5
September Board Minutes	P. 5
Thumbnail Mineral Auction	P. 6
September Meeting Minutes	P. 7
Coon Creek Report	P. 7
Show Announcement	P. 8
Jewelry Bench Tips	P. 8
Dues Notice	P. 9
New Island and Pumice Raft	P. 9
Calendar	P. 10

THE THINGS YOU CAN FIND AROUND MEMPHIS

Lou White will give the adult presentation at the November 8 Membership meeting. He will talk about “what’s in the ground” in the Memphis area: rocks, minerals, fossils, antiques, old bottles, Civil War relics—things a prospector would look for. His talk is based on 55 years of collecting.

You may be surprised about how much there



NOVEMBER PROGRAM

is to be found right under our feet. We appreciate Lou’s stepping in to replace Paul Sides, who is unable to give his talk because of illness. We’re looking forward to hearing Paul’s presentation on Crowley’s Ridge soon.

Until then, let’s go hunting in Memphis. Maybe Lou will share some of his favorite locations, or lead a field trip.

MEMPHIS ARCHAEOLOGICAL AND GEOLOGICAL SOCIETY

MAGS Rockhound News ♦ A monthly newsletter for and by the members of MAGS

2013-2014 MAGS BOARD

President—Paul Sides

1062 CR 739, Wynne, AR 72396 ♦ (870) 208-9586

1st VP (Field Trips)—W. C. McDaniel

2038 Central Avenue, Memphis, TN 38104 ♦ (901) 274-7706 ♦ w.c.mcd@att.net

2nd VP (Programs)—Ron Brister

3059 Old Brownsville Road, Bartlett, TN 38134 ♦ (901) 388-1765 ♦ bristerr@bellsouth.net

Secretary—Carol Lybanon

2019 Littlemore Drive, Memphis, TN 38016 ♦ (901) 757-2144 ♦ sgcarol@earthlink.net

Treasurer—Bill Gilbert

8588 Thor Road, Cordova, TN 38018 ♦ (901) 569-1725 ♦ billis4rox@comcast.net

Director (Asst. Field Trips)—Charles Hill

2887 Forest Hill Irene Road, Germantown, TN 38139 ♦ (901) 754-1504 ♦ hunter3006@aol.com

Director (Asst. Programs)—Guy Weaver

2563 Broad Avenue, Memphis, TN 38112 ♦ (901) 452-7554 ♦ gweaver@weaverassociatesllc.com

Director (Youth)—James Butchko

4220 Dunn, Memphis, TN 38111 ♦ (901) 743-0058 ♦ butch513j@yahoo.com

Director (Asst. Youth)—Bonnie Cooper

8695 Baylor Road, Arlington, TN 38002 ♦ (901) 377-0900 ♦ rocks4us@hotmail.com

Director (Librarian)—Ron Brister

3059 Old Brownsville Road, Bartlett, TN 38134 ♦ (901) 388-1765 ♦ bristerr@bellsouth.net

Director (Membership)—Neville Mayfield

3982 Glendale Drive, Memphis, TN 38128 ♦ (901) 386-3006 ♦ enmayfield@gmail.com

Director (Historian)—Nannett McDougal-Dykes

♦ 106 Maple Street, Stanton, TN 38069 ♦ (901) 634-9388 ♦ redchesty@yahoo.com

Newsletter Editor—Matthew Lybanon

2019 Littlemore Drive, Memphis, TN 38016 ♦ (901) 757-2144 ♦ lybanon@earthlink.net

Webmaster—Mike Baldwin

367 North Main Street, Collierville, TN 38017 ♦ (901) 853-3603 ♦ mbaldwin05@gmail.com

Show Chairman—James Butchko

4220 Dunn, Memphis, TN 38111 ♦ (901) 743-0058 ♦ butch513j@yahoo.com

MAGS and Federation Notes

Hi, MAGS Rockhounds,

The temperatures are great for collecting, the leaves are changing colors and will be falling before you know it. Autumn is a wonderful time, whether you're in the mountains of Tennessee or elsewhere.

In September I went to the Annual AFMS/SFMS meeting at the Marriott in Jacksonville, Florida. It was hosted by the Jacksonville Gem and Mineral Society. As an added bonus their annual Gem and Mineral Show was the same weekend, plus stargazing and a beachcombing field trip with lots of shells and some fossils. I met a lot of wonderful people and learned a bit more of how things are done at different levels of advancement in each Federation.

Origin-ally yours,
MAGS President
W. Paul Sides

MAGS Field Trips

November 2: Richardson Landing

November 16 & 17: Ledbetter Farm, Dale Hollow Lake

Contact W. C. McDaniel at (901) 274-7706 for details.

Please contribute articles or pictures (everybody likes pictures) on any subject of interest to rockhounds. If it interests you it probably interests others. The 15th of the month is the deadline for next month's issue. Send material to lybanon@earthlink.net.

November DMC Field Trip

WHERE: Graves Mountain, Lincolnnton, GA

WHEN: Saturday, November 16, 10:00 A. M.-5:00 P. M.

COLLECTING: Lazulite, pyrophyllite, and kyanite; world class rutile can be found rarely. Also pyrite and iridescent goethite. Over 50 different minerals can be unearthed in this extinct volcano and former mine.

INFORMATION: Walt Kubilius, Aiken GMFS, (803) 643-3281; home, (803) 215-9342, cell; wkkw@bellsouth.net; www.aikengmfs.org.

Links to Federation News

- ➔ AFMS: www.amfed.org/afms_news.htm
- ➔ SFMS: www.amfed.org/sfms/
- ➔ DMC: www.amfed.org/sfms/_dmc/dmc.htm

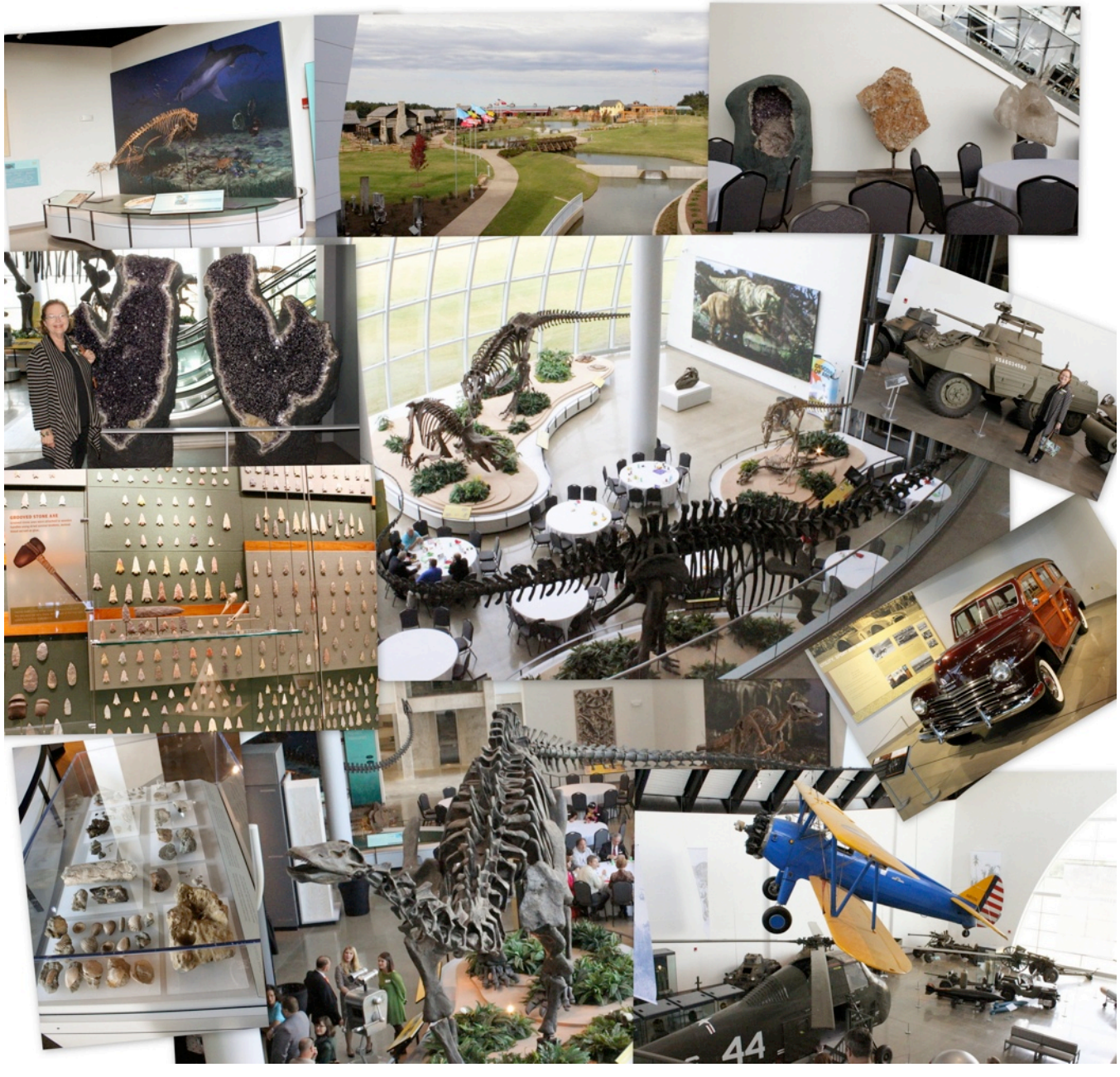
MEMPHIS ARCHAEOLOGICAL AND GEOLOGICAL SOCIETY

MAGS Rockhound News ◊ A monthly newsletter for and by the members of MAGS

Discovery Park of America We were impressed with the number of dignitaries who turned out for the event.
Continued from P. 1 We were treated to a delicious lunch, and after a few opening remarks the crowd was broken into small groups and guided through the museum.

The facility is beautiful, and there is a lot for visitors to see. There is enough variety there to please everybody's interest, from history to science. Of course, we were most interested in the minerals and fossils, and the huge display of Native American projectile points, tools, and pottery isn't bad, either. Every visitor can experience the New Madrid earthquake that created Reelfoot Lake.

We can't tell you everything the museum has to offer; there's too much to describe (it takes 2 days to see it all). The pictures will show you some of what you will be able to see when you visit Discovery Park of America. You can get more information from their website, www.discoveryparkofamerica.com.



Jonesboro Gravel Pit Field Trip

Kim Hill

A gravel pit! I really wanted to go to the pit after hearing Paul describe the size of possible agate finds. Friday night I paid extra attention to the weather, because there had been talk of rain for Saturday. Rain chances were reduced to 20%, and that in the afternoon. We had a 80% chance Jonesboro would be dry.

Up early Saturday morning, rousting the 4 grandkidlets coming with me. Packed the truck, stopped for ice, and hit the road. The kids zonked out as soon as we crossed the bridge, so my entertainment for the trip was watching the bobbing head of the kidlet sitting next to me and ignoring the gray smudge in the sky.



As always, the directions were great and I made fair time. After meeting up we made the short trip to the site, got our directions—dos and don'ts from W. C. Right off the bat Chris was finding some nice pieces and a couple of the grandkids found some nice petrified wood (we hope) and big beautiful banded chert. Then the sky I had chosen to ignore did its 20% on top of us.

Although it was cool the rain was light and bearable at first—we didn't have to use spray bottles to

wet the stones—but Momma nature wasn't happy with light rain and it became a bit heavier with some lightning thrown in for good measure. So we retreated to our vehicles to see if it would taper off.



I didn't want to know how much time I was losing. We emerged from our vehicles and spread out looking again. Belatedly the kids got out my cabana umbrella. It was still wet so I didn't have the camera out, and didn't get a picture of the four of them walking around under that giant umbrella.

The size of the "gravel" was great, 1-5 lbs or more. I found some pieces of agates, coral, chert, and just some plain pretty rocks. I saw other members find some really good pieces of agates, corals, and fossils. The rain and cool temperatures began taking its toll on the kids and some started asking to leave. I would tell myself just one more agate, just one coral, just one more anything...

If the weatherman had been right and said rain I would have had extra clothes, towels, put the

cabana umbrella up first thing, but nooooo, he said 20% (OK, he didn't say 0%)!! But I would find a nice piece, then another, then another; of course I had to keep looking.

FLASHBACK: Many a year ago my first excursion with MAGS was a trip to Nonconah at Perkins. I was happily picking through the rocks when a gentleman came up to me and said "Excuse me, but everyone else has pretty much left." I looked up and I was all alone except for him and one or two others.

On the drive back again the kids zonked out as soon as we hit the highway, and I thought about all the nice pieces I had seen and collected. The stones we were picking through were being ground up; it made me very sad, thinking of all the beautiful specimens we will never see! Come on, MAGS members, if we band together just think of how many stones we can save from a terrible demise.



MEMPHIS ARCHAEOLOGICAL AND GEOLOGICAL SOCIETY

MAGS Rockhound News ♦ A monthly newsletter for and by the members of MAGS

SandFest

Lori Carter

For a few months now you have been reading all about sand and you have been poked each time with a shameless plug for ISCS SandFest 2013. This month the sand series culminates with a full-blown plug for ISCS SandFest 2013.

Most people don't know there is an international organization for people interested in sand. The International Sand Collectors Society (ISCS) has members worldwide who exchange sand with each other as they share their knowledge and love of sand. Every few years members gather to celebrate sand in an event called SandFest.

This year, from Thursday, November 21st through Sunday, November 24th, the Georgia Mineral Society and Tellus Science Museum will be co-hosting ISCS SandFest 2013. Sand lovers and people curious to learn more about sand will converge in Cartersville, Georgia, at Tellus Science Museum. The exhibits and world-class facilities at Tellus make it a perfect venue for a conference about sand.

SandFest starts on Thursday, November 21, with field trips all day. We will visit three locations where we will collect various sands and some interesting rocks. And just to be sure everyone has a chance to attend these fun trips, one trip will be repeated each subsequent day of the conference.

Friday, November 22, begins with presentations about photographing sand. Topics include stacking software, sand photogra-

phy basics, light microscopy, and polarized light microscopy. Even when we eat lunch we will have a Lunch & Learn lecture about sand from the Tennessee border to the Georgia coast. After lunch the fun continues with informal discussion forums about books and cataloging, followed by a sand painting workshop. We'll have some time to mingle at a nice, Southern bar-becue before we jump into Family Science Night. Kids will be making sand art and sand cards as well as some curious spoons. Stereo microscopes as well as a scanning electron microscope will be available for viewing sand up close. Visitors and attendees will be awed with demonstrations by sand painting artist Heidi Scheirer McGrew.



Saturday, November 23, brings more presentations on a variety of sand topics from sand collecting in Europe, to sand containers, to sand art, to heavy sand, and the enigmatic writing sand. Lunch & Learn will be a fascinating lecture about sand collected from ant piles near the Trinity nuclear testing site in New Mexico. After lunch there are two discussion forums that will explore collecting and trading as well as storing and displaying sand. Two more exciting workshops follow the forums. In the first workshop attendees

will learn about how sand is made. Then, in the next workshop, attendees will learn how sand can be used to teach geology. That evening we will enjoy a banquet preceded by a silent auction and followed by a live auction. Keynote speaker is Dr. Robert Simmons who will present "Microscopy into Art: Adaptive Interpretation". Examples of how he has adapted microscopy into art will be on display at Tellus during SandFest too.

Sunday, November 24, winds down with a breakfast meeting for ISCS members.

All during the conference attendees can trade sand with each other in a special sand trading room. Also, the Cobb County Gem and Mineral Society's annual Rock, Gem, Mineral, and Fossil Show will be held at the Cobb Civic Center in Marietta, Georgia.

Registered attendees receive free admission to the museum all four days, special discounts at the rock show, and a sturdy canvas tote bag filled with special SandFest goodies. Though the registration deadline has passed, there may still be openings, so please contact me at sand@gamineral.com if you would like to register. For more information about SandFest, please see the website at www.iscs.sigmapbookstore.com.

September Board Minutes

Neville Mayfield for Carol Lybanon

Present: Paul Sides, Nannett McDougal-Dykes, Mark Mueller, Jim Butchko, Bob & Bonnie Cooper, W. C. McDaniel, Bill

Continued, P. 6

Memphis Archaeological and Geological Society

presents

Thumbnail Mineral Auction

- Over 150 thumbnail mineral specimens.
- Specimens are from the private estate of an Arkansas state geologist.
- Very old, varied collection and in excellent condition.
- Most are expertly mounted in individual display boxes, most are labeled as to name and location.

Saturday, November 9, 11:00 am
open for viewing at 10:00 am
2038 Central Avenue, Memphis

Auction Process

1. Specimens will be auctioned in lots with a reserve.
2. One lot of rutile, from Magnet Cove, Ark., will be auctioned by the piece.
3. Unsold lots will be auctioned by the piece at the conclusion of the auction.

All auction proceeds to the
Memphis Archaeological and Geological Society

Information

W. C. McDaniel
901-274-7706
w.c.mcd@att.net

representative sampling of mineral specimens

Cassiterite, Boliva • Hessonite, Vermont • Jeffrey Quartz, Arkansas • Neptunite, California • Quartz Scepter Amethyst King Co., Washington • Smithsonite, Rush, Arkansas • Turquoise, Arkansas • Wulfenite Red Cloud Mine, Arizona • Vanadinite, Morocco • Ruby, Burma • Rutile Crystal, North Carolina • Elestite, Arkansas • Rutile, Magnet Cove, Arkansas • Pyrite, Turkey • Herkimer quartz diamond, New York • Molybdenite Crystal, Canada • Anatase, Magnet Cove, Arkansas • Wulfenite, Mexico • Cobaltite, Sweden • Aquamarine Crystal, Brazil • Garnet Kimzeyite and dozens more

September Board Minutes Gilbert,
Continued from P. 5 Charles
Hill, Ron

Brister, Neville Mayfield.

Treasurer's report by Bill Gilbert: A refund has been received from the Agricenter. The IRS forms were submitted. Any IRS response will go the address on the forms—the Lybanons.

Membership report by Neville Mayfield: No new members, recently. I met new member Ray Roth in New Orleans, who said he travels frequently for collecting, and may visit us soon.

Field Trip report by W. C.

McDaniel: Sep 28th will be to N. MS. Birmingham Ridge, Oct 5th will be DMC trip to Coon Creek, Oct 12th will be to Jonesboro gravel pit, Nov 2nd will be to gravel pit with N. MS club, Nov 15th will be to Ledbetter farm for geodes and fossils, Jan will be for druzy quartz in MO.

W. C. proposed a new event; a combined field trip and rock swap—a “gemboree” and cookout with other clubs in the region.

Adult Programs by Ron Brister:

Sept will be Guy Weaver on TN iron furnaces, Oct will be Paul Sides on

Crowley's Ridge.

Library report by Ron Brister:

We have received 11 new books. Sat, Sep 28 will be a MAGS Archaeology Group meeting at Chucalissa at 10AM. The 29th will be an open house at Chucalissa.

Junior Programs by Jim Butchko:

Sep will be fluorescent minerals, Oct will be Post Oak Creek shale test, Nov will be clay pots.

Show report by Jim Butchko:

there will be a Show Committee meeting, tentatively Sep 19th.

W. C. McDaniel dis-

cussed show issues: *Continued, P. 7*

MEMPHIS ARCHAEOLOGICAL AND GEOLOGICAL SOCIETY

MAGS Rockhound News ♦ A monthly newsletter for and by the members of MAGS

September Board Minutes the Show treasurer is to set up a 3-year contract with the Agricenter. The Show Treasurer needs to transfer show funds to the club account. Modifications to the Show Chair job description will be voted on during the Oct meeting. Jim Butchko has been appointed 2014 Show Committee Chairman.

Old Business:

- ▶ "AuctionMAGS" will start this month. After some discussion it was decided that the September proceeds would go toward purchasing permanent tablecloths for the Show.
- ▶ Nannett McDougal-Dykes will call Mike Baldwin about contact with science fairs.
- ▶ W. C. McDaniel will have an auction of the George Newsome thumbnail collection on Nov 8th at his house.
- ▶ The Board discussed the Van Cleef Fund, and voted to combine it with the library fund and call it the "Roger Van Cleef Library and Education Fund"

New Business:

- ▶ Nannett McDougal-Dykes reported that the Delta Science Fair has invited us to provide judges in 2014. Mike Baldwin will coordinate with Nannett.
- ▶ The Ronald-McDonald House "Big Scoop" ice cream event will be Sep 28th. The board approved up to \$500 to purchase material for the event. The "Rocks Around the Clock" game will be used, again.

September Meeting Minutes

Neville Mayfield for Carol Lybanon
Paul Sides discussed the S. E. Mineralogical Society meeting in Florida, which he will attend.
No Secretary's report.

No Treasurer's report.

Membership report by Neville

Mayfield: There were three visitors and three people joined MAGS at the meeting.

Field Trip report by W. C. McDaniel:

- ▶ We are invited to the Sep 28th N. MS club field trip.
- ▶ We are invited to the Dixie Mineral Council trip Oct 5th.
- ▶ Oct 12th we go to gravel pit near Jonesboro, AR Crowley's Ridge.
- ▶ Nov 2nd we go the Richardson's Landing gravel bars for agate, petrified wood, etc.
- ▶ Nov 16th we go to Ledbetter Farm for geodes, etc.
- ▶ Jan we go to Potosi, MO, for druzi quartz and barite. Paul Sides described the many types of specimens to be found.

Library report by Ron Brister:

We have received 11 new books. Sat, Sep 28 will be a MAGS Archaeology Group meeting at Chucalissa at 10AM. The 29th will be an open house at Chucalissa.

Web report by Mike Baldwin:

described National MAGS Day.

Show report by Jim Butchko:

Committee meetings to begin soon.

Old Business:

None.
New Business: AuctionMAGS will be a monthly event, according to W. C. McDaniel.

Junior Program by Bob Cooper

and Mike Baldwin: Tonight will be fluorescent minerals.

Adult Program: Tennessee Iron Furnaces by Guy Weaver of Southern Illinois University.

Coon Creek Report

John Stanley, President, Middle Tennessee Rockhounds

27 participated in the October 5, 2013, DMC field trip to the

Coon Creek Science Center: Georgia (15), Kentucky (2), and Tennessee (10). With exception of a family of four (that were unable to find a babysitter for their three year old), everyone that expressed interest was able to participate (a few had to back out due to health or other reasons).



It was a sunny day with a temperature of 86°, close to perfect for a field trip in October. The early birds were allowed to work the "quarry" piles before the 10:00 A. M. program began. At 10:00 A. M., we joined our instructors Vickie and Pat in the dining hall for an informative session about the history and fossils of Coon Creek. After another opportunity to collect from the quarry, they turned us loose in the creek to surface collect. Toward the end of the program, several, but not all, returned for instruction and demonstration on how to clean and preserve fossils from the Coon Creek Formation.



Continued, P. 8

MEMPHIS ARCHAEOLOGICAL AND GEOLOGICAL SOCIETY

MAGS Rockhound News ◊ A monthly newsletter for and by the members of MAGS

Memphis Archaeological and Geological Society

presents the 35th annual

Memphis Mineral, Fossil, Jewelry Show

"The Earth Wide Open"

April 26-27, 2014

Agricenter

MAGS members' volunteer schedule needs:

- Friday, April 25—all day (*really big day*)
 - Saturday, April 26—all day (*open to public*)
 - Sunday, April 27—all day (*open to public*)
 - Monday, April, 28—8:00 am to 11:00 am
- *Note: We will not have Thursday available for move-in.*

☞ Show Factoid—Benefits for members ☜

1. \$15—amount show provides in free direct benefits to an adult member
2. \$54—amount show provides in free direct benefits to a family of four
(admission, grab bag party, Friday show dinner, hospitality for weekend)

Coon Creek Report Everyone enjoyed the day.
Continued from P. 7

It was good to meet members from other clubs to share and to hear of their experiences.

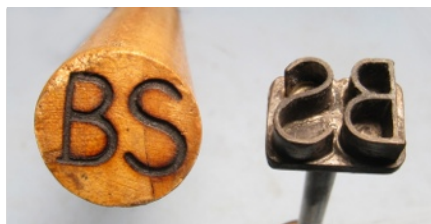
Jewelry Bench Tips by Brad Smith

MARKING YOUR TOOLS

It makes sense to mark your tools if you ever lend them to friends or take them out to classes or workshops. Question is how to mark them permanently. For metal tools, I use a very small ball bur running fast in the Dremel or Foredom to "engrave" my initials. Other times I'll form the initials with a number of hits with a center punch.

But for hammer handles and other wooden tools, the country boy in me came back and thought "Why not make a branding iron?" If you'd like to try one, all you

need is a little scrap copper or nickel about 22-24 gauge, a piece of heavy brass or copper for a base, about 6 inches of metal rod, and a piece of wood for the handle.



I formed my initials from a couple 4mm strips of sheet nickel. The "S" was one piece, but the "B" was three pieces soldered together with hard. (Remember to form

the letters backwards). I then soldered the letters with medium onto a piece of 1/8 inch thick brass bar to act as a heat sink. Finally, I soldered a piece of 1/8 round rod on the back of the brass bar as a shaft to join to a wooden handle.

BENCH TIPS HOLIDAY SPECIAL

If you find these monthly tips useful, then think how nice it'd be to have the full bench tips reference guide for your shop or as a present for a jewelry friend. Between now and Thanksgiving I'm offering a Holiday Special that includes a free bonus pack of jewelry articles with every copy purchased.

"Bench Tips for Jewelry Making" contains 101 of the most popular and useful bench tips organized into ten main problem areas. It's filled with close-up photos and has a detailed index to help find the solu-

Continued, P. 9

HELLO MELLOW MAGSTERS !!

THE NEW YEAR'S GETTING PRETTY NEAR,
SO, PLEASE CONTRIBUTE YOUR DUES, DEAR!
AND TO MAKE EVERYTHING PERFECTLY CLEAR,
AND SO WE WON'T HAVE TO RATTLE OUR SPEAR,
PLEASE SEND MONEY EARLY, AND SKIP ALL THE FEAR
OF MISSING THE FUN, AND THE TRIPS
AND THE CHEER!

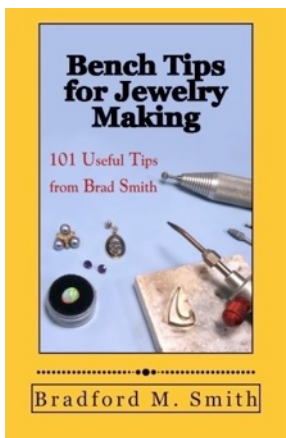
Individual dues are \$20.00, Family dues are \$25.00.

You can mail dues to MAGS, 3982 Glendale Dr., Memphis, TN 38128, or bring them to our monthly meeting.

THANKKEW VURRY MUCH!!!

Jewelry Bench Tips tion you need
Continued from P. 8 by key word.

Get your copy by going directly to my printer at CreateSpace.com/3976439.



Upon ordering the book, you will receive a confirmation email. This is your proof of purchase. Forward a copy of this to me at

benchtips@yahoo.com to receive your free bonus pack.

The articles include:

1. Cuttlebone Casting—Get wonderful textures quickly and easily
 2. Bezel Basics—Hints for making a perfect bezel every time
 3. Make Your Own Wax Pen—You'll love this \$20 electric wax tool
 4. Depletion Gilding—An easy way to avoid tarnish on your pieces
 5. Setting Up A Home Shop—Tool tips and safety considerations
 6. Building a Jewelry Web Site—Develop a plan to save money
-
More BenchTips by Brad

Smith are at facebook.com/BenchTips/ or see the book *Bench Tips for Jewelry Making* on Amazon.

New Island and Pumice Raft

August 2006 brought two new things to the Tonga Islands in the South Pacific. One was a raft of lightweight, frothy volcanic rock—pumice—floating on the ocean surface. The other was a new island emerging out of the water. The Moderate Resolution Imaging Spectroradiometer (MODIS) flying onboard NASA's Aqua satellite captured the aftermath of the eruption on August 10, 2006, at 1:30 UTC (2:30 p.m. local time).

In the image (next page), the emerging volcanic island is partially *Continued, P. 10*

New Island and Pumice Raft (continued)



hidden by its own plume. The raft of pumice appears to the north-east of the emerging island, and it actually connects, via a thin thread, to neighboring Late Island. The blue-green color of the water around the raft and the new island is probably fine sediment that is making the deep blue water more reflective. The pumice raft gained international attention when a

news report described the experience of a yacht crew that inadvertently encountered the pumice raft. The “sea of stone” clogged the yacht’s engine-cooling system, forcing the vessel to turn back. Biologists have also proposed pumice rafts as a way to explain how plants and animals spread from island to island in marine environments.

A 250-meter-resolution KMZ file of the new volcanic island in the Tonga Islands is available for use with Google Earth. There is a link to the file on earthobservatory.nasa.gov/IOTD/view.php?id=7124.

Calendar

October 31, 2013

Board Meeting, St. Francis Hospital, 6:30 P.M.

November 2, 2013

MAGS Field Trip, Richardson Landing

November 8, 2013

Membership Meeting, Shady Grove Presbyterian Church, 7:30 P.M.

November 9, 2013

Thumbnail Mineral Auction, McDaniel residence

November 16 & 17, 2013

MAGS Field Trip, Ledbetter Farm and Dale Hollow Lake

Memphis Archaeological and Geological Society
2019 Littlemore Drive
Memphis, TN 38016

