



Volume 60 ◊ Number 04 ◊ April 2014 ◊ A monthly newsletter for and by the members of MAGS

MEMPHIS ARCHAEOLOGICAL AND GEOLOGICAL SOCIETY PRESENTS

The Earth Wide Open

April 26 and 27

Number 1 Show Of Its Kind In The Mid-South

Memphis Archaeological and Geological Society
presents the 35th annual
Memphis Mineral, Fossil, Jewelry Show
“The Earth Wide Open”
April 26-27, 2014
Agricenter

MAGS members’ volunteer schedule needs:

- **Friday, April 25—all day (really *big big* day)**
 - **Saturday, April 26—all day (open to public)**
 - **Sunday, April 27—all day (open to public)**
 - **Monday, April 28—8:00 am to 11:00 am**
- *Note we will not have Thursday available for move-in*

Show Factoid-Benefits for members

1. \$15—amount show provides in free direct benefits to an adult member
2. \$54—amount show provides in free direct benefits to a family of four
(admission, grab bag party, Friday show dinner, hospitality for weekend)

MAGS just finished hosting a Dixie Mineral Council field trip (see P. 3), which attracted rockhounds from all over the Southeast to Memphis. And now we’re getting ready for an even bigger undertaking, our annual mineral, fossil, and jewelry show.

The Show will bring dealers from across the U. S.

with quality minerals, fossils, lapidary arts, jewelry, beads, petrified wood, and more. There will be exhibits and live how-to demonstrations. One of the most popular parts of the Show is the RockZone, a kids area with several fun activities. And we will give away the two Grand Prizes shown here, one for each day.



In this issue

The Earth Wide Open	P. 1
MAGS and Federation Notes	P. 2
Sugar Creek Pictures	P. 3
Have You Volunteered Yet?	P. 4
Kids Like This Stuff	P. 4
The Earth Wide Open Show Dinner	P. 4
April Membership Meeting Program	P. 5
Show Sponsors	P. 5
The Microscope—Another Great Tool	P. 6
Chucalissa House Model	P. 7
Hospitality Hosting	P. 7
May 10 Rock Swap	P. 7
Rockhound Videos	P. 8
2014 Show Dealers	P. 8
Grab Bag Packing Party	P. 9
February Board Minutes	P. 9
February Meeting Minutes	P. 10
CAGMAGS April Swap	P. 10
2014 Inter-Regional Field Trip	P. 10
President’s Message	P. 11
Jewelry Bench Tips	P. 11
Internet Tidbit	P. 11
Dinosaur Footprint Theft	P. 12
Calendar	P. 12

MEMPHIS ARCHAEOLOGICAL AND GEOLOGICAL SOCIETY

MAGS Rockhound News ♦ A monthly newsletter for and by the members of MAGS

2013-2014 MAGS BOARD

President—Paul Sides

1062 CR 739, Wynne, AR 72396 ♦ (870) 400-9060

1st VP (Field Trips)—W. C. McDaniel

2038 Central Avenue, Memphis, TN 38104 ♦ (901) 274-7706 ♦ w.c.mcd@att.net

2nd VP (Programs)—Ron Brister

3059 Old Brownsville Road, Bartlett, TN 38134 ♦ (901) 388-1765 ♦ bristerr@bellsouth.net

Secretary—Carol Lybanon

2019 Littlemore Drive, Memphis, TN 38016 ♦ (901) 757-2144 ♦ sgcarol@earthlink.net

Treasurer—Bill Gilbert

8588 Thor Road, Cordova, TN 38018 ♦ (901) 569-1725 ♦ billis4rox@comcast.net

Director (Asst. Field Trips)—Charles Hill

2887 Forest Hill Irene Road, Germantown, TN 38139 ♦ (901) 626-4232 ♦ hunter3006@aol.com

Director (Asst. Programs)—Vacant

Director (Youth)—James Butchko

4220 Dunn, Memphis, TN 38111 ♦ (901) 743-0058 ♦ butch513j@yahoo.com

Director (Asst. Youth)—Bonnie Cooper

8695 Baylor Road, Arlington, TN 38002 ♦ (901) 377-0900 ♦ rocks4us@hotmail.com

Director (Librarian)—Ron Brister

3059 Old Brownsville Road, Bartlett, TN 38134 ♦ (901) 388-1765 ♦ bristerr@bellsouth.net

Director (Membership)—Vacant

Please send Membership renewals to the Treasurer

Director (Historian)—Nannett McDougal-Dykes

♦ 106 Maple Street, Stanton, TN 38069 ♦ (901) 634-9388 ♦ redchesty@yahoo.com

Newsletter Editor—Matthew Lybanon

2019 Littlemore Drive, Memphis, TN 38016 ♦ (901) 757-2144 ♦ lybanon@earthlink.net

Webmaster—Mike Baldwin

367 North Main Street, Collierville, TN 38017 ♦ (901) 853-3603 ♦ mbaldwin05@gmail.com

Show Chairman—James Butchko

4220 Dunn, Memphis, TN 38111 ♦ (901) 743-0058 ♦ butch513j@yahoo.com

MAGS AND FEDERATION NOTES

Upcoming Field Trips

- ▶ April 5 & 6: Park Hills & Eminence, Missouri
- ▶ April 26 & 27: The Earth Wide Open, Agricenter International
- ▶ May or June: Vulcan Quarry, Black Rock, Arkansas (date subject to mining conditions and operations)
- ▶ May 24 & 25: Hot Springs/Mt. Ida Arkansas, quartz crystals
- ▶ June 21: W. C. McDaniel residence, making objects from concrete.
- ▶ July 12: A/C Appreciation Day, Part I, Discovery Park, Union City, Tennessee
- ▶ August 9: A/C Appreciation Day, Part II, Belz Museum, Memphis

Trip bulletins will be published. Contact Field Trip Chair W. C. McDaniel for more details.

April is Show month, and the April Membership Meeting program will give you a preview. See P. 5 for more details.

Please contribute articles or pictures (everybody likes pictures) on any subject of interest to rockhounds. If it interests you it probably interests others. The 15th of the month is the deadline for next month's issue. Send material to lybanon@earthlink.net.

April DMC Field Trip

WHERE: Reel Amethyst Mine, Iron City, NC (fee site)

WHEN: Saturday, April 19, 8:00 A. M.

COLLECTING: amethyst, beryl, ironized quartz, smokey quartz, and associated gems and minerals.

INFORMATION: Cost is \$25 for each digger (children under 13 free when accompanied by a paid digger). Contact Neil Hohmann at (704) 752-2889 or gisusainc@aol.com, or Chuck Borawa at (704) 545-6126 or chuckborawa@gmail.com.

Links to Federation News

- ➔ AFMS: www.amfed.org/afms_news.htm
- ➔ SFMS: www.amfed.org/sfms/
- ➔ DMC: www.amfed.org/sfms/_dmc/dmc.htm

MEMPHIS ARCHAEOLOGICAL AND GEOLOGICAL SOCIETY

MAGS Rockhound News ◊ A monthly newsletter for and by the members of MAGS

On March 29 MAGS hosted a Dixie Mineral Council field trip to Sugar Creek. About 60 people made the trip, some from hundreds of miles away. The weather could have cooperated more but we all had a good time. Thanks, Charles and W. C., for making this a really good event.



Sugar Creek Pictures



Presentations

Rockhounds on Sugar Creek



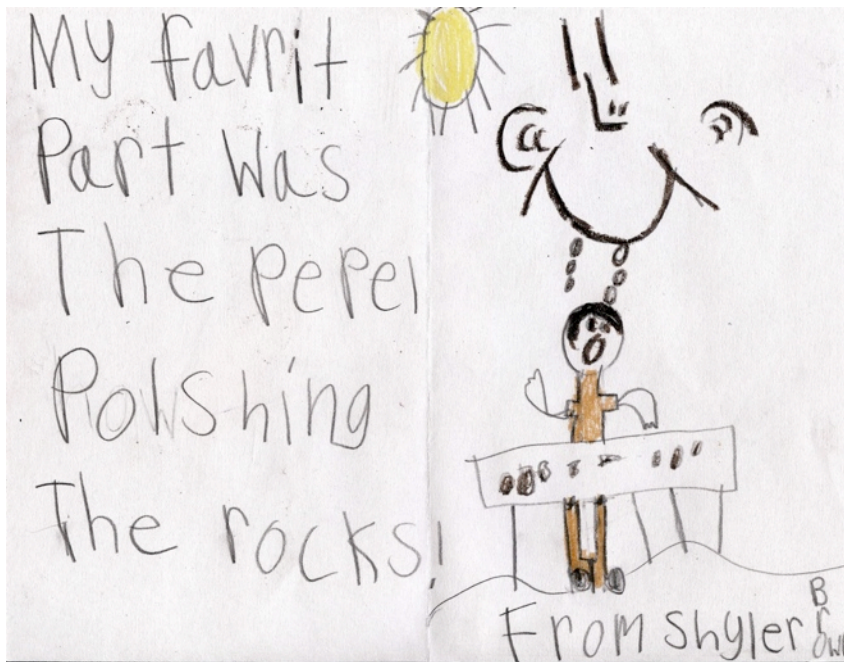
Have You Volunteered Yet?



The 2014 Memphis Mineral, Fossil, and Jewelry Show is almost here—April 26 and 27.

Call Carol at (901) 757-2144 or email her at sgcarol@earthlink.net.

Kids Like This Stuff



The MAGS Show is a wonderland for kids. A friend who likes to go rockhunting refused some free Member tickets this year. He said that the last time he went his grandchildren wore him out. The RockZone is designed for kids—and they enjoy it. But you know the old saying, about kids playing with the gift wrap instead of the present. They like the rest of the Show too.

The Earth Wide Open Show Dinner

Debbie Schaeffer



All MAGS Members are invited to attend the Show Dinner Friday, April 25, after set-up of the Show. The dinner will start around 7:00. The club will provide Leonard's Barbecue, spaghetti, slaw, beans, and rolls. All club members are asked to bring a side dish, dessert, or cans of soda or bottled water. Please RSVP for the dinner by emailing Debbie Schaeffer at dayday91@aol.com and let me know what you are planning on bringing. You will also be able to sign up at the April club meeting.

Hope to see everyone there!

MEMPHIS ARCHAEOLOGICAL AND GEOLOGICAL SOCIETY

MAGS Rockhound News ♦ A monthly newsletter for and by the members of MAGS

April Membership Meeting Program

James Butchko

At the April 11th Membership meeting, MAGSters and visitors can try out the new and improved Geode Bowling and see what's new for 2014. The old folks will get a chance to show off their knowledge and memory of MAGS history as well as the history of the show in the annual pop quiz. The Show Committee wants to hear your ideas and opinions about the Show, both good and bad. The youngsters will learn hieroglyphs from the University of Memphis Egyptology grads so they can decipher the meaning of the inscriptions left by past civilizations. In return, maybe they can teach me how to text. I bet I'll learn something. I know I'll have fun.



Sponsors, 2014 Memphis Mineral, Fossil, and Jewelry Show

Billie Jane Brandon	Cornelia McDaniel
Sherry Bright	Memphis Stone & Gravel Co. (Benefactor)
David & Beth Day (Another Day Studio)	Mike & Kathy Nagel
James Johnson	Danielle Schaeffer
Thomas & Susan Jones	Karen Schaeffer
Ray and Marilyn Lovelady	Lauren Schaeffer
Carol Lybanon	(Ms.) Jerry Seamans
Matthew Lybanon	

Cooper Moving & Storage

Enviro-Tek

It's not too late to become a sponsor. Just contact Matthew Lybanon, Show Treasurer, at (901) 757-2144 or lybanon@earthlink.net. There are three levels: Member Sponsor, \$25 minimum; Business Sponsor, \$100 minimum; and Benefactor, \$1,000 minimum. Show your spirit—be a sponsor!

The Microscope— Another Great Tool

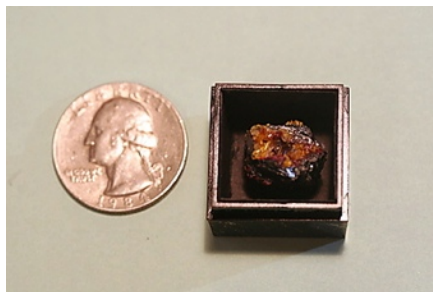
Bill Gilbert

When talking about tools for the rock and mineral enthusiast (or rockhound), one tends to think about the rock hammer and a chisel. The topic of this article is another great tool that adds huge dimensions to the hobby—the microscope. The microscope is generally used inside, and, since it lends the necessity of bringing minerals to the microscope, this tool is available and useful when the weather is bad outside. Whether studying minerals at a collecting site, creating a micromount study specimen, or just enjoying the added insight from viewing specimens, the microscope significantly enhances the rock and mineral enthusiast's experience.



The first thing that comes to mind when talking about the microscope is the field of micromineralogy. A “micromount” is a mineral specimen that requires magnification to be properly appreciated. It is usually positioned in a small box for viewing under the microscope. This is an exciting and rewarding area when it comes to studying minerals. According to one article in the magazine *Matrix*, Rev. George Gilbert

Rakestraw is frequently described as the father of micromounting in North America. Rakestraw had the opportunity to study copper minerals specimens from the Cornwall Iron Mines of Pennsylvania as early as 1878. He was noted for being first to put these specimens in a little labelled box with a lid.



It is interesting to recognize the efforts of Betsy Martin (of the Richmond Gem and Mineral Society) in identifying and documenting microscopic mineral species found at the Morefield Mine in Amelia County, Virginia. She has been noted for finding many species new to the mine. She works with Dr. Lance Kearns (of James Madison University) to have these new species officially identified. Her micromounts from the Morefield Pegmatite are highly sought after.

Rudy Bland, also of the Richmond Gem and Mineral Society, has been using his microscope to help educate his fellow members. He has spotlighted a different micromineral each month in RGMS's newsletter. This spotlight includes an amazing color photograph and a detailed description of the mineral. He assists in the club's study group called Rock Rappers, where microscopes are used in helping members identify

minerals.

Creating micromounts is an enjoyable way to use your microscope and build a very nice collection. The best thing about micromounts is that they take up much less space—with about two hundred filling a standard flat. These micromount specimens can either be self collected, traded, or purchased at special events such as the “Micromount Symposium”. The Micromount Symposium gives a person the opportunity to get specimens that were collected in areas where you might not have access.

Another great use for the microscope is to review specimens that have been field collected or are already in your collection. Fossils can be further investigated. Lapidary work can be looked at to find flaws not readily visible to the eye. Using the microscope comes in handy when one is not able to go field collecting, either because of the weather or for health reasons. The microscope makes studying the properties of a mineral so much easier—seeing the color, crystal shape, etc, that aid in mineral identification. Using reference books alongside the microscope is important. Just pull out some specimens and go exploring with them.

It is so amazing looking at minerals under the microscope. The colors and the shapes of the crystals are viewed in such contrast and detail. One specific mineral that comes to mind is malachite. Remember how malachite can be carved and shaped to show its vivid green colors and layers. Viewing

Continued, P. 7

MEMPHIS ARCHAEOLOGICAL AND GEOLOGICAL SOCIETY

MAGS Rockhound News ◊ A monthly newsletter for and by the members of MAGS

The Microscope malachite minerals under the microscope shows the green colors so much more vividly and the fibrous acicular sprays attached to its matrix are spectacular. Sometimes, it is inclusions that become visible. In a quartz crystal from Brandberg, Namibia, there are several included water bubbles called enhydros. The microscope makes viewing these water bubbles very exciting. Even looking at common crystals such as quartz and calcite through the lens of the microscope is an adventure.

Another neat usage of the microscope is in conjunction with a

digital camera mounted on the eyepiece of the microscope, a computer, and a camera-to-computer signal converter. This allows the image field of the microscope to be viewed live on the computer monitor. This is extremely useful when capturing images, sharing with a group, and for documentation purposes. Isn't technology great!

As described above, using a microscope as a tool to assist in our study and admiration of rocks and minerals adds depth and insight. The main negative aspect would be the cost. It is recommended talking to a knowledgeable person in your club who uses

a microscope. This person can help not only in the specifications, but also possibly in locating a secondhand microscope of reasonable cost. The intention of this article is to express the significant advantage of using a microscope; it doesn't attempt to specify what type should be used. Check out how a microscope can enhance your experience with rocks, minerals, fossils and lapidary.

References:

1. **Wight, Quintin: *The Complete Book of Micromounting* (1993)**
2. **John C. Ebner and Jay Lininger, *Matrix* (Spring 2003)**

Chucalissa House Model

Dr. Robert Connolly



In this image we are thrilled to introduce Amber Rae Dunn. A member of MAGS and a recent graduate of the Memphis College of Art, Amber and her mother, Tammie, dropped off this stunning house model that is representative of what would have been found on site about 1000 years ago. Amber's attention to detail is absolutely fantastic and also thoroughly researched: note the drying rack for meat and stretching rack for deer hide that contextualizes the house structure. Thank you, Amber! This will be exhibited with pride in the Museum.

Editor's Note: Adapted from Dr. Connolly's Facebook post. MAGS contributed both sweat and dollars to the construction of the full-size house at Chucalissa.

Hospitality Hosting

Carol Lybanon

Thanks, Kim Hill, for dressing up our hospitality table. We need Members to sign up and help in May, June, and July.

Please contact Carol and offer your help to set up tables, bring a bag of ice, and help with the cleanup.

May 10 Rock Swap

The next rock swap will be Saturday, May 10, at Jim and Hasami McNeil's home, 9869 Taylor Drive, Olive Branch, Mississippi ((662) 890-4126).

MAGS will provide the hamburgers and hot dogs. Everyone else please make a side dish or dessert.

The McNeils will have things to swap. It's more fun if you bring something to sell or trade. There will be a drawing for door prizes. Come and look at the magnificent Japanese garden.

Directions From Memphis

From I-240 turn south on Lamar (Hwy 78, Exit 21 I believe). Take Exit 6 in Olive Branch (15-20 miles, Bethel Road and Hacks Cross). At stop sign turn left onto Hacks Cross. Go ap-

Continued, P. 8

MEMPHIS ARCHAEOLOGICAL AND GEOLOGICAL SOCIETY

MAGS Rockhound News ◊ A monthly newsletter for and by the members of MAGS

May 10 Rock Swap proximately 0.4 mile to stop light (the cross road is MS-178). Turn left on 178 and go approximately 0.6 mile. Turn left on Dorothy (you should see a brick development sign saying Lees Crossing, Fairfield Estates), go approximately 0.1 mile. Turn right on Loftin and go approximately 0.3 mile. Turn left onto Taylor Drive and go approximately 0.1 mile (second driveway on left).

From Hwy 385 (Bill Morris Parkway), take the Hacks Cross exit. Turn right onto Hacks Cross and travel approximately 5-10 miles. At stop light at Hacks Cross and MS-178, turn right on 178 and go approximately 0.6 mile. Turn left on Dorothy (you should see a brick development sign saying Lees Crossing, Fairfield Estates), go approximately 0.1 mile. Turn right on Loftin and go approximately 0.3 mile. Turn left onto Taylor Drive and go approximately 0.1 mile (second driveway on left).

Rockhound Videos

This is a new feature that will appear occasionally (when a good video pops up) in *MAGS Rockhound News*. Thanks to David Day for suggesting this.

This month's cool video is a YouTube video called "21 Mind-Blowing Now-Extinct Lifeforms." Point your browser to

youtu.be/Okmj0xpxqXM

If any of you MAGSters come across some other good ones, please forward the information to lybanon@earthlink.net.

Memphis Mineral, Fossil, and Jewelry Show 2014 Dealers

Dealer	Primary Products Many dealers have multiple products
Geodite Minerals, Tennessee	minerals
Volunteer Gems, Florida	minerals
Eagles Nest, Mississippi	minerals
Nature's Bazaar, Georgia	beads
No Stone Unturned and Miller Minerals	rocks/minerals
One of a Kind Designer Cabs	jewelry
Planetary Parts, Georgia	minerals
Iteco, Ohio	jewelry
Arkansas Gem and Beads	beads
Stones and Bones, North Carolina	fossils
Amber America, New York	jewelry
Marble Arts/HML, Alabama	decorative arts
Rock Barrel, Tennessee	rocks
Javed's, Georgia	jewelry
Imperial Gems, Georgia	beads
JR Rocks, South Carolina	jewelry
Mineral House, Ohio	minerals
McNeil Minerals, Mississippi	minerals
Marble Gems II, Florida	rocks
Fantastic Stones, Louisiana	jewelry
C&N Gifts, Arkansas	minerals
Blue Duck Gem and Minerals, Tennessee	minerals
Geode Gallery, Illinois	rocks
Earthcrafts, Tennessee	rocks
Custom Creations, Mississippi	beads
Fall Creek Rock Shop Missouri	minerals
Leonard's Backyard Rock Shop, Arkansas	minerals
Gems and Crystals Unlimited, Georgia	jewelry
Natural Selection Crystals, Georgia	minerals/rocks/jewelry/fossils

Dealers listed in boldface are new to the Show.

Grab Bag Packing Party

Grab bags are extremely popular at our annual Show. People (adults as much as young people) love opening them to see what treasures those treasures in the bags.

Usually, the grab bags get packed opens on Saturday. But this year we day morning, so we had to find an-reason to have a party so that's what met at the storage shed and packed grab bags. The pictures show a little of what it looked like.



are inside. But somebody has to put

the Thursday night before the Show can't get into the Agricenter until Fri- other time. It seemed like a perfect we did. On March 15 the party crowd



February Board Minutes

Carol Lybanon

The MAGS Board of Directors met February 12 at the Agricenter International. The meeting was called to order at 6:40 P. M. Present were: James Butchko, Bonnie Cooper, Carol Lybanon, Matthew Lybanon, Neville Mayfield, W. C. McDaniel, Nannett McDougal-Dykes, Paul Sides, Bob Cooper, Marc Mueller, and Kim Hill.

Secretary: The minutes were accepted as presented.

Treasurer: No report.

Membership: Neville reported that at the end of February he will remove the names of those who have not renewed for 2014. W. C. will check the roster and send emails to those who have not renewed for 2014.

Field Trips: As listed in the February newsletter.

Adult Programs: Ron Brister was not present.

Junior Programs: The Juniors will be with the adults in February. Jim will contact the Egyptology graduate students to see if they can present the March program.

Show: We have our grand door prize. All of our dealer slots are filled.

Library: No report.

Newsletter: Matthew said that, as everybody knows, February is a short month, so he needs material a little earlier. He would like information on scheduled events 3 months in advance. In reply to an inquiry, our newsletter is not sent only to members. It is sent to other clubs, to other people in the community, and posted on our website. Matthew pointed out that it cost over \$1.50 to print and mail one black and white copy of the newsletter to members who don't have email. We may need to start charging extra for this service.

Webmaster: No report.

Historian/Rock Swap: Nannett will try to schedule the first rock swap

of 2014 at the McNeils'; May 10 possible date.

Old Business:

▶ Paul talked to Guy Weaver. He needs to find someone to fill the Assistant Programs Director's position.

New Business:

- ▶ We need a speaker to go to Bailey Station Elementary School. We will ask Mike Baldwin if he can do this.
- ▶ Neville stated that, as Membership Chair, he was not happy with the Junior Member category. He feels that the sponsor of a Junior Member does not have legal authority should the Junior get hurt on a field trip. After some discussion the Board thinks a signed waiver from the parents should be sufficient, as for public school field trips. Nannett said she will provide a waiver form to give to the sponsoring adult.
- ▶ Nannett announced that Shelby Farms would like us to help with their summer camp

Continued, P. 10

February Board Minutes again. It will be an abbreviated commitment, just two days for one hour each.

Continued from P. 9

The meeting was adjourned at 7:30 P. M.

February Meeting Minutes

Carol Lybanon

The MAGS Membership Meeting was held at Shady Grove Presbyterian Church on February 14. The meeting was called to order at 7:30 P. M.

BUSINESS: W. C. McDaniel reiterated the field trips for the next few months:

- ▶ February 22—Nonconnah Creek
- ▶ March 15—grab bag party
- ▶ March 29—We are the sponsors of the DMC Sugar Creek trip.
- ▶ April 5 & 6—Missouri trip
- ▶ May (Memorial Day weekend)—Arkansas quartz
- ▶ June 15—W. C. will hold a workshop on concrete stepping stones. He will also try to get us a field trip to Black Rock Quarry (pink dolomite).
- ▶ July—Discovery Park of America
- ▶ August—Belz Museum

More information will be available closer to trip dates. W. C. also asked for ideas for Fall field trips. Ron Brister was called upon to tell the Members about upcoming programs. Bill Gilbert reported that the church rent for the next few months has been paid. Neville Mayfield reported that the renewals for 2014 are due now, and that 2013 Members who have not renewed will be dropped from the roster at the end of February. Matthew Lybanon asked Members to send pictures and articles for the newsletter. Ron stated that the library has something for everybody. Mike Baldwin is working on new pages for the website. We are still getting

35,000-40,000 hits per month. Jim Butchko said that club Show tickets and advertising pads are available at the back of the room. President Paul Sides called on Carol Lybanon to talk about sponsors for the Show, volunteers for the Show, and the new rock cycle table for the Show.

DISPLAYS: There were two adult displays.

PROGRAM: At 8:05 the meeting was turned over to Mike Baldwin for the program, "Hitchhikers Guide to the Solar System."

CAGMAGS April Swap

The Central Arkansas Gem Mineral and Geology Society is having the 2014 annual swap meet on April 12th at Burns Park in North Little Rock. MAGS is invited. The swap is for rock-related items only: buy, sell and trade, or just have a good time. There is no charge to attend or to set up. Set up your tables or tailgate; there is plenty of room. Restrooms and playgrounds for kids are located next to the swap area.

The swap is from 8:00 A. M. till 4:00 P. M. on Saturday, April 12th, at the Elder Johnson Pavilion next to the Visitor Center in Burns Park. Take exit 150 (Military Drive) from I-40 and go ¼ mile north, take the first road to the west and go to the end of this road.

For more information contact Mike Austen at steelpony@aol.com or (501) 868-4553.



2014 Inter-Regional Field Trip

Doug True

Terry, Montana

July 31 and August 1-3, 2014

Four full days of fun and 3 days of field trips. The present plans call for 3 trips per day to the Yellowstone River for 3 days, 2 trips to hunt cretaceous sea fossils, and working on one trip per day for dinosaur fossils. Because our trips are during the dry (fire) season we will be using buses for transportation to the gravel bars on the river. Plus several autos in case someone needs to return to the park. We will be staggering the trips with 4-5 hours collecting each day. All of our trips will be on a first come first served basis. Signups will start on Wednesday 30 July and Thursday morning the 31st.. If we need to add more trips for the river or sea fossils we will; the dino trips might be limited. You will not go back to the same location; each day is a new spot.

As you may have noticed our trips will run between 4-6 hours each day. Temperatures in August can run between 85-95 degrees, sometimes even higher. We don't want anyone getting heat stroke and we want to enjoy all of the fun at the park. You will be collecting on dry river gravels and sagebrush areas and could encounter a rattlesnake now and then, some times ticks, and except for the river always cactus. You need to plan your clothing for the trip: long pants, hats, good shoes, sun block and plan the have lots of water.

There's more, but the best way to *Continued, P. 11*

2014 Inter-Regional Field Trip get Continued from P. 10 the

details is to contact Doug True at dtruefossils12@yahoo.com. And don't wait too long. The RV parks (all 34 spaces) and hotel rooms (all 48 rooms) in Terry are filling up.

Hey, MAGS Rockhounds,

Ready for a spectacular show at the Agricenter in Memphis? Our Show Committee and volunteers can still use more volunteers. With more people it lessens the load on others. So sign up if you haven't.

Our mineral and gemstone show is a great place to buy Mother's Day and Christmas gifts, and gifts for other occasions throughout the year. Find the unusual, rare, or hard to find minerals, fossils, and gems.

Just a reminder: while you're out on the local creeks you should really pay attention to unsettled gravel, sand, and mud after a large rain. You really should stay off of the lower creeks and go to the upper creeks. Wait at least 3 days after a large rain before entering a creek. Last April in my President's message I told of the potential dangers, so read and learn

Origin-Ally Yours,
W. Paul Sides
MAGS President

Jewelry Bench Tips by Brad Smith

POLISHING WHEELS

In the finishing sequence there's a step called pre-polishing, between sanding and buffing, and one of the most effective tools I've

found to help here is the little silicone wheels used in a Foredom or Dremel. They come in several different abrasive levels and several different shapes. The wheels are color coded to denote their abrasive level. Different shapes (coin, knife, cylinder, point, etc) are available to match the geometry of the area being cleaned up.



For a starter, I'd suggest a medium, a fine and an extra fine wheel in both the coin shape and the knife-edge shape. The thicker coin shapes are particularly handy. Be sure to get a few extra mandrels so you'll have one of each wheel shape mounted and ready to go.

Cylinder shapes are nice for doing the inside of rings. Knife-edge shapes clean up the base of bezels quickly. Most jewelry catalogs carry these wheels, but often the color codes don't match between different manufacturers.

RESHAPING SILICONE WHEELS

Silicone polishing wheels in the Dremel or Foredom are a great time saver, but after using them a bit they often need to be reshaped. This is particularly true with the knife-edge wheels.

The natural thought is to grab

one of your files and hold it up against the rotating wheel to reshape it. But this gives you a problem. The grinding grit in the silicone wheel is much harder than steel, meaning that you end up grinding down the teeth of your file.



The best way to reshape your polishing wheels is to use a diamond file. If you don't have one and must use a steel file, I sacrifice the area of the file that is closest to the handle. That's an area which is not used in normal benchwork.

Get all 101 of Brad's bench tips in "Bench Tips for Jewelry Making" on [Amazon](https://www.amazon.com).

Internet Tidbit

Have you ever wondered how memory metal works? This alloy of nickel and titanium "remembers" its original shape after being deformed. It helps your kids' braces work better, and eyeglass frames made of memory metal keep their shape better. You can find out more at this link:

www.ehow.com/about_6511595_memory-metal-work_.html#page=0

MAGS Rockhound News thanks Paul Sides for calling our attention to this.

Dinosaur Footprint Theft



A federal grand jury has indicted a Utah man, Jared F. Ehlers, 35, of Moab, on four counts related to the dinosaur footprint taken from the slickrock near Moab on February 17. The most serious count carries a penalty of 20 years in prison. Ehlers' initial appearance in U.S. District Court is set for April 22.

The footprint was one of about 20 in the Hell's Revenge jeeping area near the Sand Flats Recreation Area, just east of Moab. The rock had partly come loose from the ground and appears to have been pried free with pry-bars, said Rebecca Hunt-Foster, Canyon Country paleontologist for the BLM, shortly after the theft.

The footprint has not been recovered. The charges filed against Ehlers are removal of paleontological resources, theft of government property, depredation of government property, and destruction of evidence.

Calendar

April 3, 2014

Board Meeting, St. Francis Hospital, 6:30 P.M.

April 5 & 6, 2014

MAGS Field Trip to Missouri

April 11, 2014

Membership Meeting, Shady Grove Presbyterian Church, 7:30 P.M.

April 12, 2014

CAGMAGS Annual Swap Meet, North Little Rock

April 19, 2014

DMC Field Trip to Iron City, NC

April 26 & 27, 2014

Memphis Mineral, Fossil, & Jewelry Show

Memphis Archaeological and Geological Society
2019 Littlemore Drive
Memphis, TN 38016

