



Volume 59 ◊ Number 02 ◊ February 2013 ◊ A monthly newsletter for and by the members of MAGS

2012 At Chucalissa

Dr. Robert Connolly, Director, C. H. Nash Museum at Chucalissa



MAGS Members Assisting In Artifact Processing

At our February Membership Meeting, Robert Connolly will speak on the accomplishments and research direction that have occurred at the C. H. Nash Museum in the past year. The accomplishments include building of the replica prehistoric house (gen-

erously supported through a contribution from MAGS), recertification of our arboretum, establishing a medicinal plant sanctuary, the re-inventory of curated collections, and the use of those collections in several research projects. *Continued, P. 3*

In this issue	
2012 At Chucalissa	P. 1
Show Door Prize	P. 1
MAGS and Federation Notes	P. 2
December Board Minutes	P. 3
February Field Trip	P. 4
December Meeting Minutes	P. 5
What's Happening At Chucalissa?	P. 5
If You Wait Long Enough ...	P. 5
2013 Field Trip Schedule	P. 6
MAGS Field Trip Manual Samples	P. 7
January Field Trip Pix	P. 7
Jewelry Bench Tips	P. 8
The Oldest Rock In The World	P. 8
Chunky Gal Mountain Field Trip	P. 9
March DMC Field Trip	P. 9
Volunteers Needed	P. 10
Calendar	P. 10

MAGS 2013 SHOW GRAND DOOR PRIZE

The Grand Door Prize for the 2013 Memphis Mineral, Fossil, and Jewelry Show (April 27 and 28) is a 20 pound spectacular and absolutely deep midnight purple fluorite mineral display specimen from the Cave-in-Rock area of Illinois. The picture at right will give you an idea of what it looks like, but you need to see the real thing to appreciate it fully.



54 days and counting, as of February 1, 2013.

MEMPHIS ARCHAEOLOGICAL AND GEOLOGICAL SOCIETY

MAGS Rockhound News ♦ A monthly newsletter for and by the members of MAGS

2011-2012 MAGS BOARD

President—Paul Sides

1062 CR 739, Wynne, AR 72396 ♦ (870) 208-9586

1st VP (Field Trips)—W. C. McDaniel

2038 Central Avenue, Memphis, TN 38104 ♦ (901) 274-7706 ♦ w.c.mcd@att.net

2nd VP (Programs)—Ron Brister

3059 Old Brownsville Road, Bartlett, TN 38134 ♦ (901) 388-1765 ♦ bristerr@bellsouth.net

Secretary—Carol Lybanon

2019 Littlemore Drive, Memphis, TN 38016 ♦ (901) 757-2144 ♦ sgcarol@earthlink.net

Treasurer—Bill Gilbert

8588 Thor Road, Cordova, TN 38018 ♦ (901) 569-1725 ♦ billis4rox@comcast.net

Director (Asst. Field Trips)—Charles Hill

2887 Forest Hill Irene Road, Germantown, TN 38139 ♦ (901) 754-1504 ♦ hunter3006@aol.com

Director (Asst. Programs)—Guy Weaver

2563 Broad Avenue, Memphis, TN 38112 ♦ (901) 452-7554 ♦ gweaver@weaverassociatesllc.com

Director (Youth)—James Butchko

4220 Dunn, Memphis, TN 38111 ♦ (901) 743-0058 ♦ butch513j@yahoo.com

Director (Asst. Youth)—Bonnie Cooper

8695 Baylor Road, Arlington, TN 38002 ♦ (901) 377-0900 ♦ rocks4us@hotmail.com

Director (Librarian)—Ron Brister

3059 Old Brownsville Road, Bartlett, TN 38134 ♦ (901) 388-1765 ♦ bristerr@bellsouth.net

Director (Membership)—Neville Mayfield

3982 Glendale Drive, Memphis, TN 38128 ♦ (901) 386-3006 ♦ enmayfield@gmail.com

Director (Historian)—Nannett McDougal-Dykes

♦ 106 Maple Street, Stanton, TN 38069 ♦ (901) 634-9388 ♦ redchesty@yahoo.com

Newsletter Editor—Matthew Lybanon

2019 Littlemore Drive, Memphis, TN 38016 ♦ (901) 757-2144 ♦ lybanon@earthlink.net

Webmaster—Mike Baldwin

367 North Main Street, Collierville, TN 38017 ♦ (901) 853-3603 ♦ mbaldwin05@gmail.com

Show Chairman—James Butchko

4220 Dunn, Memphis, TN 38111 ♦ (901) 743-0058 ♦ butch513j@yahoo.com

PRESIDENT'S MESSAGE

Winter weather is upon us so dress accordingly on field trips and abroad. You may want to consider carrying a blanket and an emergency winter survival kit in your auto. A pair of coveralls, gloves, and toboggan would be a good idea as well.

When on field trips, double check the signup list before collecting and before everyone leaves the site. Make sure everyone is accounted for.

Check on people you know that live alone or have disabilities.

Origin-Ally yours,

W. Paul Sides

Upcoming Membership Meeting Programs

FEBRUARY: Dr. Robert Connolly, Chucalissa

MARCH: Dr. Michael Gibson, TN Science Education

APRIL: MAGS Show

Board Members: Don't forget—the March Board Meeting will be on February 28.

Please contribute articles or pictures (everybody likes pictures) on any subject of interest to rockhounds. If it interests you it probably interests others. The 15th of the month is the deadline for next month's issue. Send material to lybanon@earthlink.net.

February DMC Field Trip

WHERE: Vulcan Limestone Mine, Brooksville, FL
[Editor's Note: See P. 5 for more information and pictures.]

WHEN: Saturday, February 9, 9:00 A. M.-2:00 P. M.

COLLECTING: Echinoids, druse calcite crystals, chert.

INFORMATION: Fred Hendershot, (813) 892-5864, or Carolee Boyles, (813) 431-4304.

Links to Federation News

- ➔ AFMS: www.amfed.org/afms_news.htm
- ➔ SFMS: www.amfed.org/sfms/
- ➔ DMC: www.amfed.org/sfms/dmc/dmc.htm

MEMPHIS ARCHAEOLOGICAL AND GEOLOGICAL SOCIETY

MAGS Rockhound News ◇ A monthly newsletter for and by the members of MAGS



Newly constructed Missippian Era Replica House

2012 At Chucalissa Our future re-
Continued from P. 1 search direction
will include the
use of our recently inventoried
collections coupled with archived
field records to provide opportuni-
ties for professionals, students,
and avocational archaeologists to
more readily participate in re-
search projects at the C. H. Nash
Museum.



Volunteers Planting Herbs in the Medicinal Plants Sanctuary

December Board Minutes

Mike Baldwin

The meeting was called to order at 1842 by President Lou White. Present: Guy Weaver, Lou White, Neville Mayfield, Marc Mueller, James Butchko, Bob Cooper, Bonnie Cooper, Charles Hill, Doris Johnston, Ron Brister, Matthew Lybanon, Carol Lybanon and Mike Baldwin.

Lou White called for introductions of old and new board members. Bonnie

Cooper asked if anything needed to be done for the December party. Lou said that Nannett has everything under control. The board approved Carol's request to

purchase poinsettias for the party.

Secretary: Mike presented copies of the November board and meeting minutes for review. Minutes were accepted and approved with minor corrections.

Membership: Neville reported that membership recruitment has been slow the last couple of months. The roster has been updated. Membership dues are due January 1. Board members need to be current.

Field Trips: Marc reported that the DMC field trip for December is to War Trace, TN to collect horse mount agates. Guy gave the board a description of horse mount agates.

Junior Programs: James reported that the January program will be centered around creating artwork using stamps and paints.

Carol's last report as Director-Youth. Gifts for the Juniors have been bagged and they will receive them at the December party.

Show: James reported that almost two thirds of the dealer contracts for 2013 have been received. James contacted the Ronald McDonald House (RMH) and they informed him that they are okay with MAGS using up the post cards that we currently have which emphasize our association with RMH. They also stated that we do not have to specify a donation amount or a percentage of our show income to be used as a donation in order to stay associated with RMH. James suggested that perhaps we should change our donation schedule

to tie in with education. A long discussion about proceeds from the show followed. Neville asked "fundamentally what are we trying to fund, MAGS or charities?" Doris thought that perhaps we should look at organizations whose purpose is in line with ours. Carol suggested that we donate to RMH for 2013 and make a decision on future donations right after the show. MAGS needs to be our first charity. Matthew said that RMH received as much funds from the show in 2012 as MAGS did. Neville thought we should just see how the show goes and donate accordingly. He reminded us that we do have a commitment to Chucalissa. Mike suggested that we should support causes such as Chucalissa, TEST (Tennessee Earth Science Teachers), and TEA (Tennessee Education Association). Carol added funding for the proposed Nonconnah Science Park as a possibility. She said that it would be nice to have petitions and funding for the park. To end out our discussion on the show James talked briefly about our concerns around the cost of doing business at the Agricenter. He said it is not an easy process to move venues. The Agricenter has not gone up all that much and we are doing well at that location.

James told the board that a large fluorite cluster (for the 2013 Grand Prize) and a large piece of petrified wood (for the 2013 Saturday door prize) have been pulled from the Theobold Collection. James asked Mike to look for fluorescent pictures to be used on the 2013 Show post cards. Bob said he has some beautiful specimens that could be photographed.

Field trip suggestion: Bonnie reported that she and Bob had just returned from a field trip to the Peace River in Florida. They brought materials home with them for a future project in the MAGS youth group. She said the Peace River has an abundance of ice age fossils and

Continued, P. 4

MEMPHIS ARCHAEOLOGICAL AND GEOLOGICAL SOCIETY

MAGS Rockhound News ◊ A monthly newsletter for and by the members of MAGS

The field trip bulletin for the following trip is available to MAGS Members. **Please read and pay attention to the field trip bulletin.**

Sat., Sun. Feb. 16/17 Monday is holiday Trip to Missouri brand new site(cleared)	Park Hills, Missouri druse quartz lace agate barite large and good yard rocks bottles/glass
--	---

Notes

The MAGS field trip manual will be available by 1/20.
I will be out of town from 1/27 to 2/7.

Druse is a coating of fine crystals on a rock fracture surface, vein, or within a vug or geode.

W. C.

December Board Minutes MAGS
Continued from P. 3 should plan
a trip there.

There is an RV park nearby which only charges \$5.00 per car. The Tampa club goes there every month.

Field trip information: Charles reported that the water is down at Pickwick and along the Tennessee River. He has been finding some good stuff there. He and Lou will be going to Chunky Gal Mountain, NC, sometime in late January or early February to search for zoisite and corundum.

Treasurer: Doris will help Bill get settled into his new role as MAGS treasurer. MAGS Southeast Federation insurance fees are due by the end of January. Carol and Matthew will take care of submitting the paperwork and paying those dues. Neville will supply Doris and Bill with the numbers of members (adults and youth) on the MAGS roster for insurance purposes. This insurance covers members on field trips. Doris reported that the sell of minerals from the Carol Burnett collection brought in \$822.00. \$410.00 of that amount has been paid to Ms. Burnett. Anita Westlake, November's MAGS pro-

gram presenter, sent an email stating that she had not received reimbursement for her travel expenses. Doris will take care of sending payment to Ms. Westlake.

Programs: Ron welcomed Guy Weaver to the board as Director-Assistant Programs. Programs for the first quarter of 2013 will be: Milton Moreland, Ames Plantation, in January; Robert Connolly, Chucalissa Museum, in February; and Michael Gibson, TEST and UT-Martin, in March. Ron reported that he is working on the development of a MAGS archaeology sub-group which will meet at Chucalissa one day every month. Projects for the new sub-group will include preparation of artifact collections at the museum and creation of new displays for the museum. Ron will have an interest questionnaire at the December meeting.

Library: Ron will be inventorying the MAGS library in January. The library will not be open at the December meeting.

Newsletter: Matthew began his report with a brief update on the Dallas, Texas, field trip last month. 15 people from MAGS attended the very suc-

cessful field trip. We reduced the ammonite population in Texas and Oklahoma substantially. Everyone who attended came home with good specimens. There may be another trip in our future. On the newsletter, Matthew told the board that normal distribution is by email. The cost of printing and mailing one newsletter is \$16.00 per year. Only those without email access get mailed copies. Mike will check into printing the 13-15 copies of the newsletter each month. Mike will mail the newsletters and get reimbursement from the treasurer. Board members, please get your articles and reports in on time.

Web: The website has been updated for December. Several board members mentioned that there are broken links to many of the past issues of *MAGS Rockhound News*. Mike will troubleshoot and fix the links tonight.

Assistant Programs: Guy said that he is glad to be on the Board. He asked about the process for submitting articles for the newsletters. Matthew explained that articles are welcomed from any knowledgeable source as well as web-based articles. Guy suggested that

Continued, P. 5

December Board Minutes MAGS
Continueud from P. 5 should go
on an ar-

chaeological dig sometime in the near future. "You don't keep what you find, but it is very educational and worthwhile." A brief discussion of possible new collecting site/archaeological sites followed.

December Party: Board members bring canned soft drinks, instead of 2-liter bottles. We have several unopened bottles in our cabinet. We will need cups and ice for the party. Marc will ask Nannett if someone needs to get those. Neville said he would bring ice.

Having no further business to discuss, the meeting adjourned at 1950.

December Meeting Minutes

Carol Lybanon

The MAGS Membership Meeting was held at Shady Grove Presbyterian Church on December 14. The meeting was called to order at 7:30 P. M. 51 Members and 8 visitors were present.

President Lou White welcomed everyone to the 2012 Holiday Party. He introduced Paul Sides as the incoming President. Paul gave a brief speech about the upcoming year, and said that he would welcome any new ideas. So please let him know.

Outgoing President Lou White thanked the outgoing Board and introduced the incoming Board.

W. C. McDaniel gave a Field Trip report for the first part of 2013. Lou presented W. C. with a plaque and a gift certificate, for all the good work W. C. has done as President and Show Chair.

Neville Mayfield reminded everyone that the 2013 dues should be paid now. He reminded people that they would be dropped from the roster if their 2013 dues were not paid before April 1.

Marc Mueller gave the blessing before everyone enjoyed the festive meal.

What's Happening At Chucalissa?

Rachael South Bogema
Administrative Associate

We have escaped the snow and ice here at Chucalissa, and are gearing up for the spring semester! We welcome one new Graduate Assistant, Allison Hennie, as well as several interns to our staff. This semester will prove to be busy and productive as we work on renovating exhibits, developing our strategic plan, and hosting an Ameri-corps group in March!

Interested in volunteering at Chucalissa? Come out to our Volunteer Days! We will host our monthly volunteer event on Saturday, February 16, from 9:00 A. M. to 1:00 P. M. Visit the museum for an hour or the entire morning to participate in a wide variety of volunteer projects!

Last, but certainly not least, be sure to come out and participate in our 15th Annual Relic Run 5K on Saturday, March 2, 2013. All proceeds will go toward lowering the cost of educational visits to the site. Sponsored and timed by the Memphis Runners Track Club, the race begins and ends at the C. H. Nash Museum. The paved course winds through the scenic woods of Chucalissa and T. O. Fuller State Park, making it easily navigable for wheelchairs, strollers, and children. In addition to 1st, 2nd, and 3rd place awards in all categories, all participants will receive a t-shirt in their race bags. Registration is easy and online at racesonline.com.

If You Wait Long Enough ...

Carol Lybanon



For more than 15 years I've been told of good fossiling at a quarry in Brooksville, Florida. Until now I had no idea how to get into the quarry. My daughter Julie joined the Tampa Bay Fossil Club (TBFC) and found out that they make monthly field trips there. This year Matt and I became members of the TBFC thanks to our daughter. For several years we thought about visiting her at a time when we could participate in their trip, but until this January it never worked out.



On Saturday morning, January 12, we set out for Vulcan Quarry in Brooksville. It

Continued, P. 6

Experiencing the Earth Wide Open



**Memphis Archaeological and Geological Society
2013 Field Trip Schedule**

**-Specific trip information is available upon request via email or at membership meetings*

Date	Trip Destination	Material
Sat, Sun Feb 16/17 Monday is holiday	Park Hills, Mo. (Sat) Eminence, Mo. (Sun)	Park Hills, Mo. (Sat) druse quartz. lace agate barite large and good yard rocks bottles/glass Eminence, Mo. (Sun) calcite crystals, dolomite druses and crystals
Tuesday, March 5	I-40 East exit tour Site 1–near Parsons Site 2–near Dickson About 360 mile round trip	selenite and fossils fossils
Saturday, March 16	Nonconnah Creek	bottles and rocks
Saturday, April 13	Sugar Creek near Millington	gravel bars, agates, petrified wood
Saturday, May 18 (tentative)	Frankstown, Miss.	fossils

If You Wait Long Enough ... turned
Continued from P. 5 out to be
a really
fun day. We collected echinoids
(sea biscuits and sand dollars—we
didn't get a whole one but some
participants did), different types
of shell casts, and other things like
bones. There were about 45 cars
in our "parade" to the collecting
site. The weather was wonderful
and spending time with our Flor-
ida daughter was the best. Mat-
thew and I hope to be able to plan
another trip to Tampa that coin-
cides with another visit to the Vul-
can quarry at Brooksville.



What we looked for.



Collecting site.



What we got.



***MAGS Members Julie
and Carol Lybanon.***

MEMPHIS ARCHAEOLOGICAL AND GEOLOGICAL SOCIETY

MAGS Rockhound News ◇ A monthly newsletter for and by the members of MAGS

MAGS Field Trip Manual Samples

MAGS Field Trip Manual is now available. Email W. C. to request a copy. If you want a hardcopy contact W. C. at 274-7706.

Sample parts of two pages of the manual

Field Trip Collection Record (FTCR)

Use this form(s) to record specific specimens that you collect on a MAGS field trip. Record as many as you wish. The record will serve two purposes:

1. The FTCR will provide you with a record and documentation of your finds. Be sure to place the label with your specimen or develop a recording system to keep up with your finds.
2. The FTCR will provide you with the opportunity to participate in club and show display contest.

Specimen: _____	Specimen: _____	Specimen: _____
Location: _____	Location: _____	Location: _____
Date: _____	Date: _____	Date: _____

Field Trip Record (FTR)

Use this form to record and track your attendance and participation in officially designated MAGS field trips. The FTR will be used to award special prizes at the end of the year. If you attend a trip record:

1. One point for attending and participating
2. Two points if you donate at least 10% of your collected finds to MAGS
3. Three points if you donate at least 25% of your collected finds to MAGS

date	Field trip	points

January Field Trip Pictures *Marc Mueller*

Here are a few pictures from the January 12 field trip to Robert Duncan's Lapidary Shop. Everybody enjoyed seeing all of Robert's machinery, tumbled rocks, slabs, and agates.



Robert Duncan's Lapidary Shop.



There was a lot to look at.



Robert, thanks for your hospitality.

Jewelry Bench Tips by
Brad Smith

BENCH SHEARS

When cutting sheet metal, it's quicker and easier to use a set of shop shears as compared with using a hand saw. The cut is not as precise, but many times you don't need that. Shears will easily cut up to 24 gauge sheet, and some will cut 22 or even 20 gauge.

Current prices for shears run from \$13-\$22 in jewelry catalogs, and the Joyce Chen scissors recommended on some jewelry blogs run more than \$20. But we found a cheaper alternative at the 99 Cent Store-some gardening utility scissors that were only \$1.07



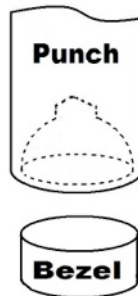
I buy a half dozen of them at a time for use in my jewelry classes. They're great for cutting bezels, trimming around a bezel cup, and cutting a piece off a larger sheet.

BEZEL CLOSER

A bezel closer is a steel punch that makes quick work out of pushing the metal down over a round stone and burnishing it. The working end is a concave cavity that fits over your bezel or prong setting and is pushed and twisted to capture the stone. Sets can be purchased but are expensive and contain many sizes you

will probably never use. If all you need is one or two sizes, here's how you can make them yourself.

Find a good quality, round steel rod a little larger in diameter than your bezel cup or prong setting. Cut a 5 inch length. File both ends flat. Locate the center of one end, centerpunch a divot, and drill a small pilot hole about 5 mm deep. Remember to use a little oil as lubricant when cutting steel.



Select a ball burr a bit smaller than the steel rod but slightly larger than the bezel. Enlarge the pilot hole to a full hemispherical cavity. Test for proper fit with your bezel. Bezel should first contact the cavity about a third of the way in. When the size is correct, polish the cavity using Zam on a length of chopstick in your flex-shaft. If the tool is not polished, it will leave scratches on your bezel or prongs.

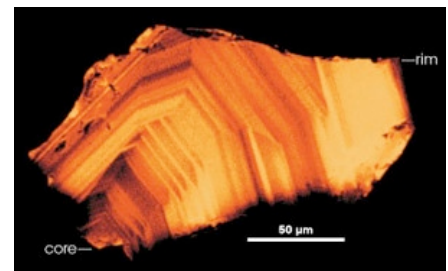
When using the tool, the first step is to capture the stone correctly. I usually work by hand and push the punch straight down over the bezel or prongs. This causes the metal to start bending over the stone. Now inspect with a lens to be sure the stone is staying level. This is repeated until the stone is seated on its bearing and can't move anymore.



Next, you want to force the metal down onto the stone uniformly all the way around. While this can be done by hand, I often gently tap the punch with a hammer. Finally, I burnish the bezel by twisting the punch around.

More BenchTips by Brad Smith are at [facebook.com/BenchTips/](https://www.facebook.com/BenchTips/) or see the book *Bench Tips for Jewelry Making* on Amazon.

**The Oldest Rock
In The World**



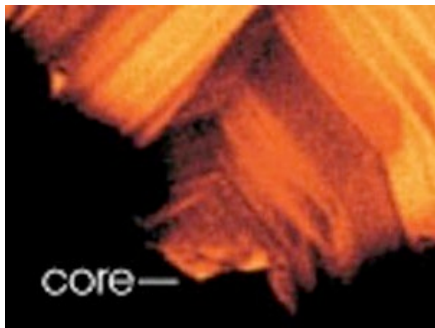
This tiny rock could rewrite the history of our planet. It's a zircon, from the Persian word "zargun" meaning "golden colored," an extremely durable mineral found all over the world. This one turned up in Western Australia's Jack Hills, sitting inside a larger rock. Scientists found that this little grain formed around 4.4 billion years ago. That would make it the oldest rock we've ever seen on this planet.

Continued, P. 9

The Oldest Rock ... Geologists think the Earth is 4.5-4.6 billion years old, which would mean that this rock formed 100-200 million years after the Earth formed. No surface rocks survive from earlier times because volcanic activity caused rocks to be heated, vaporized, melted, pulled down into the Earth. There were oceans of burning lava everywhere; asteroids were crashing in from above, setting the air on fire.

This earliest period has a name; it's called the Hadean Eon, from the ancient Greek, Hades—basically, a polite term for "hellish." Among other things, it was too hot for life.

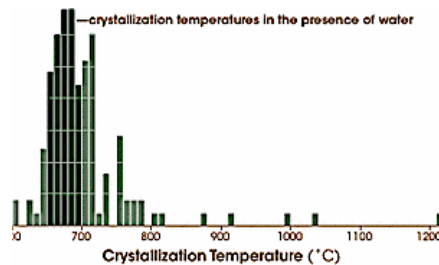
When geochemists Bruce Watson and Mark Harrison looked more closely at this grain, they could see where it "started." Crystals are minerals that grow from a hotter, liquid state, and this crystal got its start on the lower left, in the spot marked "core."



As crystals grow, they pick up other minerals. When this little pebble grew, it grabbed on to little bits of titanium. Geochemists know that zircons will grab more titanium when it's hotter, less titanium when it's colder. Watson and Harrison calculated that when these zircons formed, the tem-

perature was about 680°C.

Rocks that crystallize at these temperatures have been exposed to water. This is something geologists know. According to Watson, "Any rock heated in the presence of water—any rock, at any time, in any circumstance—will begin to melt at between 650 and 700 degrees. This is the only terrestrial process that occurs so predictably."



In other words, here was evidence that the red hot, lava-laced, boiling, lifeless Earth of 4.4 billion years ago had water on it! What's more, Watson says, "we feel our results point more strongly toward the idea of surface water."

This is "a radical departure from the conventional wisdom," according to Harrison. It suggests that even though meteors and asteroids were bombarding the Earth, even though volcanoes were highly active, there must have been intervals—maybe in the first 150 million years of Earth history—when the Earth could have supported an ocean.

At this point the story gets into speculation. There is evidence that the conditions on Earth that led to the creation of life existed much earlier than previously thought. While there is probably no way to confirm it, life could have formed, been blown away, then formed again—and one of those times, down at the bot-

tom of some temporary ocean, sitting by a warm vent—it stayed. And possibly earlier than we thought.

That is speculation. But a tiny rock found in Australia gives us new information about the Earth's early history. This is fact.

More information:

earthobservatory.nasa.gov/Features/Zircon/
www.annualreviews.org/doi/abs/10.1146/annurev.earth.031208.100151?journalCode=earth

Chunky Gal Mountain Field Trip

Charles Hill is taking us to the North Carolina mountains again. On February 22-24 he will lead a trip to Chunky Gal Mountain, searching for corundums and zirconite. You can join him camping on the mountain, or you can find other accommodations in Franklin, about 20 miles away. For more information contact Charles at (901) 626-4232 or hunter3006@aol.com.

March DMC Field Trip

Editor's Note: Because this trip will be so early in March, the information is listed in this issue.

WHERE: Durham Mines, Walker County, GA

WHEN: March 2, 2013, 9:00 A.M.-4:00 P.M.

COLLECTING: Pennsylvanian Plant Fossils

INFORMATION: Jeff Deere, (770) 386-5447 (home), (770) 655-2298 (cell),

wjdeere@comcast.net or jeff.deere@brownind.com.

Volunteers Needed



It's time to think about volunteering for the Show. The 2013 Memphis Mineral, Fossil, and Jewelry Show is only a little over 6 weeks away. It takes lots of people to make our Show a success. We need people to sign up for 2-hour shifts for hospitality, ticket sales, the RockZone, and other areas. We also need your help to fill grab

bags, set up tables, set up the RockZone, and tear down the Show on Sunday night. Be a part of the Show. It's fun, and if there are lots of volunteers nobody has to work very hard.



Calendar

February 8, 2013

Membership Meeting, Shady Grove Presbyterian Church, 7:30 P.M.

February 9, 2013

DMC Field Trip, Brooksville, FL

February 16 & 17, 2013

MAGS Field Trip, Park Hills, MO

February 22-24, 2013

MAGS Field Trip, Chunky Gal Mountain, NC

February 28, 2013

Board Meeting, St. Francis Hospital, Library, 6:30 P.M. (March meeting)

Memphis Archaeological and Geological Society
2019 Littlemore Drive
Memphis, TN 38016

