



# M A G S NEWSLETTER

Volume 48, Number 04

Memphis Archaeological and Geological Society

April 2002

## INSIDE THIS ISSUE

### Member Pages

From The President .....	1
Board Members .....	2
Sunshine Report .....	2
April Birthdays .....	2
Lapidary Workshops .....	2
MAGS Trip: Arlington TN .	3
DMC Trip: Tracy City TN..	3
SFMS Graves Mt. Dig .....	3
MAGS Field Trip Schedule	3
Board Meeting Minutes .....	7
General Meeting Minutes ...	8
2002 Rock Show .....	9

### Youth Member Pages

Frankstown Fossils .....	5
2001 Junior of the Year .....	5
Cryolophosaurus Dino Card .	6
Crinoid (April Specimen) ...	6

### Feature Articles

Paleontological Quiz .....	4
Science Fair Winners .....	10



MAGS Newsletter is published monthly by and for the members of the Memphis Archaeological and Geological Society. Please send your comments to Mike Baldwin, 367 North Main Street, Collierville, TN 38017.

## WHAT'S HAPPENING IN APRIL



**MEETING:** 7:30pm, April 12, 2002 (Doors open at 7:00) at Shady Grove Presbyterian Church, 5530 Shady Grove Road, in Memphis, TN • Don't forget to bring your

favorite snack or dessert to share with everyone and bring a display. One adult winner and one youth winner are selected from the displays each month. The monthly winners are eligible for prizes at the end of the year.

**ADULT PROGRAM:** "Crater of Diamonds" presented by Craig Johnson

**YOUTH PROGRAM:** "Frankstown Fossils" presented by Idajeen Jordan

**MAGS FIELD TRIP:** April 13, 2002 to Memphis Stone & Gravel's Arlington, TN plant (see page three for details)

**DMC FIELD TRIP:** April 27, 2002 to Tracy City, TN to collect fern fossils (see page three for details)

**23RD ANNUAL MID-AMERICA MINERAL, FOSSIL, JEWELRY SHOW:** April 27-28, 2002 at the Pipkin Building, Mid-South Fairgrounds (see page nine for details)

## GREETINGS FROM THE PREZ!

Man alive! We've got 30 vendors all lined up just waiting on "The Show" to open, so pull out your wallet and get ready to spend some bucks on the 27th and 28th of this month. As a MAGS member, don't forget that you get in free, but we need for you to work too. Sign up at the April meeting to help out in any way you can. Mark your calendar for April 26th too. That's the Friday before "The Show". There's lots to be done to get ready for the opening bell Saturday morning. If you can help, let W.C. know as soon as possible. Friday night is our traditional show dinner. Bring your favorite food and drink, and make sure you bring enough to share. I can't hardly wait for show time. I hope to see all of you there sometime during the weekend.

We've got some great field trips and programs planned for the rest of the year, but they won't be nearly as great, if you're not there. Mark your calendars for all the MAGS events. Let's make this the best year ever for our club. If you're interested in hosting a Rock Swap/Picnic at your house, let Paula Gunther know and she'll put you on the list.

See you at the meeting! *Lou White*

## 2001-2002 MAGS OFFICERS

**President--Louis White**

3805 Melanie June, Bartlett, TN 38135  
901-937-8522

**1st VP (Field Trips)--David McIlwain**

305 Catlin Dr, Oakland, TN 38060  
901-465-7388

**2nd VP (Programs)--Paul Sides**

1062 CR 739, Wynne, AR 72396  
870-238-8078

**Secretary--Raynee Randolph**

6578 Birch Walk Dr, Memphis, TN 38117  
901-367-9329

**Treasurer--Bill Scheffer**

2959 Sky Way Dr, Memphis, TN 38127  
901-358-1194

**Director--Dr. James Cole**

8280 Bon Lin Dr, Memphis, TN 38133  
901-382-0344

**Director--Darryl Levitch**

903 Wingfield Rd, Memphis, TN 38122  
901-323-0678

**Director--Dick McKittrick**

5431 Brantford Rd, Memphis, TN 38120  
901-683-3235

**Director--Park Noyes**

3366 Rosita Circle W, Memphis, TN 38116  
901-396-5835

**Director--Alan Parks**

3405 Joffre Ave, Memphis, TN 38111  
901-454-5195

**Editor--Bill Scheffer**

2959 Sky Way Dr, Memphis, TN 38127  
901-358-1194

**Librarian--Nancy Folden**

379 McDermit, Memphis, TN 38120  
901-683-8497

**Youth Program--Don Blalock**

5900 Hwy 51 N, Horn Lake, MS 38637  
662-342-0903

**Web Coord/Co-Editor--Mike Baldwin**

367 N Main St, Collierville, TN 38017  
901-853-3603

**Membership--Cornelia McDaniel**

2038 Central Ave, Memphis, TN 38104  
901-274-7706

**Historian--Idajean Jordan**

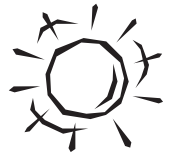
104 Plainview, Memphis, TN 38111  
901-452-4286

**Show Chairperson--W.C. McDaniel**

2038 Central Ave, Memphis, TN 38104  
901-274-7706

**Show Treasurer--Dick McKittrick**

5431 Brantford Rd, Memphis, TN 38120  
901-683-3235



## SUNSHINE REPORT

**FRANK & FRANCIS WALKER--Dr.**

James Cole has had surgery and is very ill. Please remember Dr. Cole and Melba during this very anxious time.

Remember Anna Scheffer and W.C. McDaniel's sister, Janice Forbus, as they recover from recent surgeries.

Also remember Teresa Ward, as she grieves the loss of loved ones.

*If you have a report on any member, please call 372-6206 and let us know.*



## APRIL BIRTHDAYS

April Birthstone is DIAMOND

- 1--Frank Walker
- 7--Michael Kingsley
- 7--Charley McPherson
- 7--Kerri Williams
- 9--Karen Ehrlich
- 9--Debbie Parker
- 10--Leah Novarese
- 11--Ruth Ault
- 12--Shelby Swink
- 13--Joyce Stafford
- 14--Cedric Vaughan
- 15--Teresa Ward
- 20--Tyler Murphree
- 22--Carlene Bell
- 22--Mildred Johnson
- 27--Kathy Bullard
- 28--Ruth Rice

## UPCOMING EVENTS

- Apr 27-28 **MAGS SHOW**, Pipkin Building, Mid-South Fairgrounds, Memphis, TN
- May 3-5 SFMS Rock Swap/Dig Graves Mt., GA
- May 10-12 GA Mineral Society Show, Cobb Civic Center, Marietta, GA
- June 8 Weinman Mineral Museum Rock Swap, Cartersville, GA
- June 12-15 SFMS Board Meeting Asheville, NC
- Aug 31 Hendersonville Gem & Mineral Soc, Micro-Mount Symposium, Salvation Army Bldg, Hendersonville, NC

## UPCOMING WORKSHOPS

- Apr 12-18 Wildacres Session 1
  - June 9-15 William Holland 1
  - Aug 19-25 Wildacres Session 2
  - Sep 16-22 Wildacres Session 3
  - Oct 13-19 William Holland 2
- Details/course descriptions can be downloaded from the new SFMS website at <http://www.amfed.org/sfms>

## WEB STATISTICS

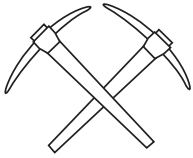
Here's a brief look at our website ([www.memphisgeology.org](http://www.memphisgeology.org)) from 01.21.02 through 03.24.02:

Visits*	2,465
Hits**	18,489
No. 1 Page	The Show
No. 2 Page	Mineral Guide
No. 3 Page	Club Trips
No. 4 Page	Newsletter

\* visit= every time someone comes to the site  
\*\* hit= each time a page is viewed

## BE A REPORTER

We need your articles and ideas for the MAGS Newsletter. Please email them to [rockclub@earthlink.net](mailto:rockclub@earthlink.net) or send them by mail to Mike Baldwin, 367 N. Main St., Collierville, TN 38017 or call Mike at 853-3603 if you have an idea for an article or a series of articles. The deadline for the May issue is April 19.



## MAGS FIELD TRIP ARLINGTON, TENNESSEE

8:00AM, SATURDAY, APRIL 13, 2002 – FIELD TRIP LEADER ALAN PARKS (901) 454-5195

**Location:** Memphis Stone & Gravel Company–North Plant Facility, Millington-Arlington Road.

**Directions:** Take Paul Barrett Parkway to Stewart Road Exit (between Brunswick Road & Hwy 70). Go north on Stewart to stop sign. Turn left onto Pleasant Ridge Road. Go about 1/4 mile and turn right onto Deadfall Road. Take Deadfall Road to Millington-Arlington Road. and turn right at stop sign. Entrance will be on the north side of road about 1/2 mile.

**Surface collecting:** (very easy) gravels from terrace deposits of Pliocene/Pleistocene; agate, petrified wood,

geodes, quartz pebbles, and fossils.

**Time/Schedule:**

8:00- 8:30 Introduction to mining and safety

8:30-10:00 Operational Tour

10:00-12:00 Collecting

12:00- 1:00 Lunch (provided by Memphis Stone and Gravel Company)

1:00- 3:00 Collecting

**Note:** If you are going please let Alan Parks know so they will have enough food for everyone.



## DMC FIELD TRIP TENNESSEE FERN FOSSILS

AN OFFICIAL FIELD TRIP OF THE TENNESSEE VALLEY ROCK AND MINERAL CLUB (HOST) CHATTANOOGA, TENNESSEE -- 10:00am Central, Saturday, April 27, 2002

**Collecting:** Fern Fossils

**Equipment:** Geology hammer, buckets, and chisels. Bring rubber boots and a change of clothes since the collecting in a stream and the stream banks. Be sure to bring something to eat and drink.

**Meeting location:** In the truck stop overflow parking lot across from the truck stop at I-24 Exit 133 (Tracy City).

**Directions:** From Chattanooga, take I-24 towards Nashville, Tennessee. Exit the Interstate at Exit 135, Tracy City. Turn

right from the exit toward Tracy City. The Truck Stop is on the right. The overflow lot is on the left. We will caravan to the collecting site. The collecting site is approximately 17 miles from the meeting location.

**Contact:** Phil Herren, Email: [pwherren@earthlink.net](mailto:pwherren@earthlink.net) , Phone: 423-309-1372

**Please Note:** DMC field trips are exclusively for DMC member clubs! This trip is closed to non-DMC clubs, their members, or members of the general public.

### GRAVES MOUNTAIN, GEORGIA ROCK SWAP, BBQ AND DIG

8 am to 6 pm, Friday, May 3, 2002

8 am to 6 pm, Saturday, May 4, 2002 (BBQ also)

8 am to 6 pm, Sunday, May 5, 2002

This dig is open to all SFMS clubs and members. Collecting will be from 8-6 all three days. Participants must stop at the gate and sign liability (and make a small contribution). Special area in the parking lot designated for “rock swap” all three days. Call Junior Norman @ 706-359-2381 or email [dmc@gamineral.org](mailto:dmc@gamineral.org) if you plan to attend and if you need “rock swap” table space.

### UPCOMING MAGS FIELD TRIPS

**Apr 13** Memphis Stone & Gravel, Arlington, TN

**May 25/26** Mark Twain National Forest, Potosi, MO

**Jun 29/30** Quartz Crystal Mines, Mt. Ida, AR

**Jul 27** Magnet Cove, Malvern, AR

**Aug 24** Tunnel Mine, Yellville, AR

**Sep** MAGS host Dixie Mineral Council

**Oct 26** Richardson Landing, Millington, TN

**Nov 23** Birmingham Ridge, Tupelo, MS

## PALEONTOLOGICAL QUIZ

1. The second largest known Cretaceous theropod found in North America is:  
(a) Tenontosaurus (c) Tyrannosaurus  
(b) Albertosaurus (d) Allosaurus
2. All shelled cephalopods except Nautilus died out at the end of the Cretaceous  
(a) True (b) False
3. K/T stands for \_\_\_\_\_
4. Whales first appeared during which epoch of the Tertiary? \_\_\_\_\_
5. Brachiopods are a form of bivalve.  
(a) True (b) False
6. Which of these is not a plant fossil?  
(a) Pentremites (c) Pinus  
(b) Neuropteris (d) Sequoia
7. When did grass first show up in the fossil record?  
(a) Late Cretaceous (c) Pennsylvanian  
(d) Miocene (d) Holocene
8. Mastodons were a type of dinosaur.  
(a) True (b) False
9. Mosasaurs are most closely related to:  
(a) snakes (c) monitor lizards  
(b) turtles (d) dinosaurs
10. Trilobites are little changed in today's oceans from what they were like 500 million years ago.
11. How old does something have to be to be called a fossil? \_\_\_\_\_
12. Spiders first appear in the fossil record in the:  
(a) Miocene (c) Silurian  
(b) Permian (d) Holocene
13. A fossil cannot have the same name as a living species.  
(a) True (b) False
14. Camels first appeared in:  
(a) Asia (c) North America  
(b) New Zealand (d) Africa

## PALEONTOLOGICAL ANSWERS TO THE QUIZ

1. (b) Albertosaurus checking in at 30 feet long. Only Tyrannosaurus was larger at 50 feet long.
  2. (b) False. Ammonites died out with dinosaurs, but belemnites held on until the Eocene. Nautilus is still here.
  3. K/T stands for Cretaceous/Tertiary referring to the boundary between the Paleocene and Cretaceous Epochs. K was used for Cretaceous since C was already taken for Carboniferous.
  4. Whales first appeared during the Eocene Epoch.
  5. (b) False. Brachiopods are not clams. They are a totally different phylum. During the Paleozoic, brachiopods were common, clams were not. Most brachiopods died out at the end of Paleozoic and bivalves took over.
  6. (a) Pentremites is an invertebrate animal related to crinoids, starfish, and sea urchins. Neuropteris was a Paleozoic fern, Pinus is a pine, and Sequoia is a redwood.
  7. (d) Miocene. Prior to this there were only weeds.
  8. (b) False. Mastodons were mammals, a type of elephant that reached their peak about 10,000 years ago, during the last Ice Age.
  9. (c) Monitor lizard. Mosasaurs were lizards, who like the whales of the Tertiary, were a land form that returned to the sea.
  10. (b) False. Trilobites became extinct at the end of the Paleozoic.
  11. There is no set date for declaring something a fossil. Some think that a fossil should represent an extinct species dating at least back to the Pleistocene.
  12. (c) Silurian. Spiders are one of the earliest land dwellers.
  13. (a) True. For example, modern sand shark *Carcharias taurus* teeth are indistinguishable from those of its 58 million year old ancestors.
  14. (c) North America, the Great Plains of the US.
- This Paleontological Quiz was submitted by Roger Van Cleef via the *Arkansas Rockhound News* (February 2002), *The Rockpile* (December 1999), and *Dinny's Doins* (May 1997). Original quiz by Jonathan Campbell.



# MAGS YOUTH

## APRIL YOUTH PROGRAM FRANKSTOWN FOSSILS

The April program on “Frankstown Fossils” will be presented Idajean Jordan. The Frankstown site serves as a window into Mississippi’s distant past when dinosaurs roamed the land and giant reptiles and sharks swam tropical seas. As the pounding surf captured these creatures, along with driftwood and shells, they were deposited in a blanket of sand at the bottom of the Demopolis Sea.

Many vertebrate fossils have been uncovered at Frankstown in the hills south of Twenty Mile Creek. These fossils are concentrated below an oyster bed in the 1.5 foot thick Demopolis Formation, part of the Campanian Stage of the Cretaceous Period. It contains the remains of land animals, as well as fresh and salt water creatures. These remains were mixed together as the Cretaceous sea pushed northward into Tennessee about 75 million years ago.

Vertebrate fossils found at Frankstown are dominated by dagger like teeth from the shark Scapanorhynchus and brad-serrated teeth of the shark Squalicorax. Other fossils include teeth of the extinct fish Enchodus and Xiphactinus, turtle bones, mosasaur teeth and vertebrae, crocodile teeth and rare dinosaur teeth. Dinosaur fossils at Frankstown include the grinding teeth of the plant-eating duck billed hadrosaur. Water-worn pieces of petrified wood are also common.

### YOUTH MEETING NOTES

- (1) At the April meeting, we will have details on the “Egg Carton Display Contest” (which will be take place at the Rock Show); parents of members who have not displayed before need to present at the April meeting.
- (2) Let Don Blalock know (by May 1) if you are going to be at the May meeting (May 10), so he can have enough supplies for the Mother’s Day gifts you will be making.
- (3) Mark your calendar for June 15: Youth Field Trip to Frankstown, MS to collect Cretaceous fossils.

## 2001 SFMS JUNIOR ROCKHOUND OF THE YEAR



Congratulations to the first Southeast Federation Junior Rockhound of the Year, MAGS member Kelly Baldwin. Kelly has been a member of MAGS for five years, but she has been collecting rocks and fossils since she was in kindergarten. Kelly loves fossils—dinosaur bones, sharks’ teeth, crinoids, blastoids—if it’s a fossil, she loves it! Her ambition in life is to be a paleontologist and find the next big dinosaur.

Of approximately 85 clubs in the Southeast Federation of Mineralogical Societies (SFMS), the top seven youth members in the federation are members of MAGS. Jennifer Baldwin, Kelly Baldwin, Alstone Caillier, Michael Devine, Michael Harris (runner-up), Abbey Randolph, and Emily Randolph (The MAGS Seven) were all very busy in 2001, going on field trips, attending meetings, visiting museums, collecting fossils and minerals, building displays, conducting earth science experiments and just generally getting into the science they have all chosen as a hobby.

We should tip our hats to Don Blalock and ALL the members of the MAGS Youth. Don continues to provide the youth with quality programs and field trips, and the youth continue to be involved and inspired. More young people are joining all the time, and all we can say is . . . *bring ‘em on!*

### CRINOID STEM SPECIMEN FOR APRIL

Youth members: come to the April meeting to get a crinoid stem specimen for your collection.

## DINOSAUR FACTS CRYOLOPHOSAURUS

**Scientific Name:** Cryolophosaurus elliotti

**Pronounced:** Cry - o - Lof - o - Saw - rus

**Diet:** Carnivore (Meat-eater)

**Name Means:** "Frozen Crested Lizard"

**Length:** 20 ft. (6 m)

**Height:** 7 ft. (2 m)

**Weight:** unknown

**Time:** Early Jurassic - 190 mya

Cryolophosaurus is the first meat-eating dinosaur to be discovered on the frozen continent of Antarctica. It was an odd looking dinosaur, fairly large for such an early hunter. It had a very unusual crest, sort of a single horn without a point. It is an important discovery not only because of where it was found, but also because it shows features found on both early, less advanced meat-eaters and later more advanced meat-eaters such as Allosaurus. When this dinosaur was roaming around on Antarctica, that island continent was a part of Pangaea and attached to Africa, South



America and Australia in a much warmer part of the world.

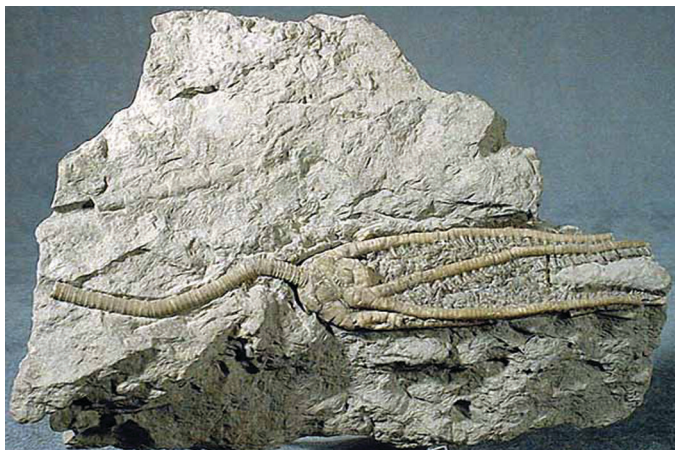
It is possible that Cryolophosaurus will be assigned to the ceratosaur family once further study is concluded. Little is known of this dinosaur due in part to the inhospitable environment where its remains were discovered. It is likely an important piece of the puzzle for theropod development, bridging both primitive and more advanced features.

### SPECIMEN OF THE MONTH

## CRINOID ACTINOCRINITES

During the Mississippian period (Lower Carboniferous) 360 to 320 million years ago, sea lilies dominated the seas and reptiles began to appear on land, along with ferns. This Period is the last time limestone (the major Mississippian rock type) would be deposited by widespread seas on the North American continent. Crinoids and their relatives, blastoids, were widespread in North America; the Mississippian is known as the Age of Crinoids. There are more than 6,000 species of fossil crinoids. Because crinoids were so widespread, this can be thought of as a time of warm, clear seas since crinoids were filter feeders requiring the high calcium carbonate concentrations only possible in warm waters to build their skeletons. Five large projections (spines)

protected the crinoid from being eaten by fish. Smaller projections were arms that helped gather food particles floating in the water. The column (stem) was attached to the small circular center at the base of the calyx (head).



Order: Monobathrida  
 Family: Actinocrinitidae  
 Informal name: Sea lily  
 Era: Paleozoic  
 Period: Carboniferous (Mississippian)  
 Distribution: Worldwide  
 Occurrence: Common

## MARCH BOARD MEETING MINUTES

RAYNEE RANDOLPH--The March board meeting of MAGS was held 02/28/02 at McAlister's, Poplar and Highland. The meeting was called to order at 6:45pm by President Lou White. The following were present: Mike Baldwin, Don Blalock, Nancy Folden, Idajean Jordan, W.C. and Cornelia McDaniel, David and Diane McIlwain, Dick McKitrick, Park and Terry Noyes, Alan Parks, Raynee Randolph, Bill Scheffer, and Lou White. The minutes from the February Board and General meetings were accepted and approved with one correction.

### THE FOLLOWING REPORTS WERE GIVEN:

**PRESIDENTS** – Next month's board meeting place will be at Perkins in the Eastgate shopping center, same time.

**1st VP** – The field trip for March will be at Vulcan Quarry, Saturday the 23rd from 8-12pm, then on to Dr. Cole's property in Parson's for selenite. The April field trip will be with Memphis Stone and Gravel, North Arlington, for an operational tour. Lunch will be provided for those that attend. Those that cannot go on the field trip to Arlington may check with Dr. Cole about volunteering at the booth set up at the flea market to pass out show flyers.

**2nd VP** – The program for March will be presented by Lynn Doyle – Argentina. April will be the history of Diamond State Park, Arkansas. May will be Kent Reilly – Chucalissa. June will be fossils of Arkansas with John D. McFarland. July will be Magnet Cove by Mike Howard.

**TREASURER** – Bill Scheffer presented his report for March. Motion made, seconded and carried to approve report, subject to audit. We have had a substantial increase in the cost of printing the newsletter, and will be experiencing a postal increase in the future. It's time for the annual dues. You can pay your dues to Bill Scheffer by mail or you will not receive the 2002 Directory.

**LIBRARY** – About half of the info sheets have been filled out. More help is still needed to finish the task. Shelves have been made for our videos so our collection will now be more visible.

A big thanks to Bill Scheffer for making the shelves.

**EDITORS** – There is going to be a Name the Newsletter contest. If you have a catchy title, tell Mike Baldwin. More details later. Keep those articles coming. We may have enough for the next couple of months but a good hefty surplus would be great.

**WEB** – We have some statistics to share. Our website has been visited by 16 countries, 19 educational institutions, and 9 different states.

**YOUTH** – The younger youth will have a "Collecting In The Field" program to tie in with the youth field trip on Saturday, March 9, 2002. The older youth will be placing material in bags for the dry sluice. Goody bags also need to have labels put on them, not at this meeting but this may be a job for later. Junior Of The Year results are in and will be announced at the general meeting.

**MEMBERSHIP** – Delinquent members have been called about dues, some memberships have been turned in. Please send in your checks for dues this month. The board approved new family memberships. A big welcome to the Ethridge family, the Dulin family and Tyler Murphee, and the Novarese family.

**SHOW** – Show committee will meet Tuesday, March 5th at 7:00pm. So far we have 30 dealers, 7 exhibitors, 6 club member exhibits, rock food table, 6 demonstrators, 8 club booths, and 3 guest speakers. Bring material for the gem dig to the next meeting. You can never have too much. See the newsletter for more details you can help with.

**SPECIAL COMMITTEE** – Diane McIlwain has graciously volunteered to be the rock swap coordinator for the year 2002. If you want to have a swap at your house please call Diane.

**OLD BUSINESS** – Science fair time again. Judging will be March 5th and March 19th. Three \$50.00 dollar gift certificates to the gem show will be awarded as prizes to the winners. Meeting adjourned at 8:10pm.

## YOUR NEWSLETTER IS IN THE (E)MAIL

Would you like to receive your MAGS newsletter by email? There are several advantages to receiving your newsletter by email. The newsletter is sent out electronically on the first day of every month, so you could be receiving club news days earlier. The email version of the newsletter is in color for viewing on your computer or printing on your color printer. If you would like to receive the email version, and aren't already, send your request to [rockclub@earthlink.net](mailto:rockclub@earthlink.net).



## MARCH GENERAL MEMBERSHIP MEETING MINUTES

**RAYNEE RANDOLPH**--The March meeting of MAGS was called to order by President Lou White at 7:35pm on Friday, March 8th, 2002 at the Shady Grove Presbyterian Church with 59 members and 10 visitors present. Visitors were: Carl Warren, Scott Chandler, Sherry Barton, Emily Barton, Bev Crockett, Charles Hill, Emily Fox-Hill, Jared Rogers, and Ken and Alex Burke.

**1st VP** – On March 23rd, 2002 we will be going to Vulcan Quarry. We will only be collecting marine fossils there until noon. At 1:30 we will be traveling to Dr. Coles' property on Holiday Road to collect selenite. Please sign up on the field trip list and include your phone number. This is a very easy field trip, so if you are a visitor and have never gone with us, then this would be a great first trip. The April field trip date has been changed from April 20th to the 13th. We will be going to the Arlington site of Memphis Stone and Gravel. There will be an overview of the mining operation, a plant tour, and a visit to a reclamation area. Collecting will be permitted after the tour. Lunch will be provided, so we need an accurate count of those that wish to go.

**2nd VP** – Our program in April will be "Crater of Diamonds State Park". May will be "Mississippian Symbolism" by Dr. Kent Reilly, June will be "Fossils of Arkansas" by John D. McFarland, and July will be "Magnet Cove" by Mike Howard.

**PROGRAM** – Tonight's program is presented by Lynn Doyle and Diane Hampton, with Memphis-in-May. They will be presenting a lecture on Argentina. Argentina will be the country honored by Memphis-in-May this year. The world's largest meat-eating dinosaur, the Gigantisaurus, came from Argentina and a replica will be on display, May 10-11 in Audubon Park.

**SHOW** – Volunteer sheets are available tonight. Please, sign up wherever you can help. This show cannot take place without YOU. A good amount of food will be needed for the dinner we host on Friday evening. We need everyone's participation to make this show a success. The grand door prizes are on display tonight. They are a megalodon tooth and a beautiful bracelet. There is also a box with the kind of material that will be in the grab bags. If you have ANY MATERIAL for the grab bags or the gem dig, PLEASE bring it to the next meeting. No material will be turned away. Our advertising campaign will begin soon. During the flea market in April, fliers will be handed out. If you can help please see W.C. Take the new business cards and the member tickets and start passing them out. Fliers for your cars and bulletin boards that you can post on work great.

**WEB** – The newsletter is now available over the Internet. If you would prefer to receive your newsletter electronically, please sign the form that will be circulating. If you choose electronic mailing, the newsletter will print out in color and there will be a savings to the club from less postage. If you do not have a computer, your newsletters will continue to come in the mail.

**MEMBERSHIP** – New member packet for Michael Kingsly is ready. More new member packets will be available next month.

**LIBRARY** – Library is open. Please take time and fill out one of the cards in the books. Several can be done by each member, so help out when you can. Please take special note of our new display shelves for our video collection. Thanks you, Bill Scheffer.

**YOUTH** – There will be a junior field trip to Florence Alabama tomorrow. Please see the newsletter for details. If you have a member of your family involved in the youth program, please be aware that the field trips may vary from the general club field trips. The youth will have field trips in addition to the other field trips that have already been scheduled. The youth trips need adults as well, mainly to help with transportation, but keep in mind that you get to go as well!!! We have some awesome trips planned for the year, so keep in tune!!!

**ANNOUNCEMENTS** – George and Rena Everett were here to award Junior of The Year prizes. This was a year's worth of work and point keeping for several different activities, so to those new members it is not too late to start for this year. Awards were as follows: Grand prize went to Kelly Baldwin. Kelly received a plaque and a specimen of apophyllite from India. Runner up was Michael Harris. Michael received an emerald from Brazil. The next highest point winners were Jennifer Baldwin, Alstone Cailier, Michael Devine, Abbey Randolph, and Emily Randolph. All the participants received a certificate of appreciation. We can be very proud of our young people. They have worked very hard and are already counting points for the year 2002. Thanks to George and Rena for the judging and for the SFMS for the prizes.

**DISPLAYS** – (1) Scott Chandler--Double Geode; (2) Nancy Folden--Irish Bog; (3) Mike Cannito--Green Prehnite; and (4) Melissa Johnston--Creekbed material from Ureka Springs. Mike Cannito was the winner.

**DOOR PRIZE WINNER** – Melinda Warren

The meeting adjourned at 8:55pm followed by refreshments.



## MAGS PRESENTS THE 23RD ANNUAL MID-AMERICA MINERAL, FOSSIL, JEWELRY SHOW

Pipkin Building, Fairgrounds

Friday, April 26 - 6:30pm - Show dinner and special events for members and vendors

Saturday, April 27 9:00am - 6:00pm • Sunday, April 28 10:00am - 5:00pm

### Who's coming and what's happening

- 30 dealers from 14 states including a first time dealer in Arizona petrified wood including a trailer load 2-3,000 pound logs
- 8 exhibitors including: "Diamond, The Amazing Mineral" (a display of uncut diamonds from around the world); and "Dinosaurs in Mississippi" (a collection from Frankstown, Mississippi by the Pink Palace).
- 8 club members participating in the club (retail) booth
- 7 club members displaying their collections
- 6 demonstrators displaying and showing their skills from cabbing to flint knapping
- 3-5 speakers, look for announcement at the April meeting
- A treasure chest full of grab bags
- The ROCKZONE packed with kids, parents and MAGS members
- Door prizes and two grand door prizes. (Members wishing to register for the grand door prizes must buy a regular admission.)
- About 50 pounds of Memphis barbecue with tables and tables of good fun. Watch for special prizes and events. Don't forget to bring your answers to the monthly question. Check your newsletters for the questions (since January). A complete list of questions is available on our web site ([www.memphisgeology.org](http://www.memphisgeology.org)) and at the April membership meeting
- Hopefully lots of people and you to. Bring about a baker's dozen of your friends, relatives and neighbors.

### What we need and what you can do

- Volunteers for the Show—of the 72 (minimum) slots, we have 15 commitments to date. We need your commitment and participation so SIGN UP TODAY!
- Volunteers for the Flea Market (April 20-21)— of the 16 slots we have one (1) commitment to date.
- Continue to distribute show announcement and tickets
- Bring lots of food (for Friday night) and canned drinks, bottled water and snacks for Saturday and Sunday
- Material for the Gem Dig and Grab Bags—**Warning**— if we have a very good Saturday and face the potential of running low on Sunday you will be getting a phone call on Saturday night requesting you to go to your rock pile and bring in material. So avoid that midnight excursion and bring it to the club meeting or Friday night dinner. Also, help out by bringing cleaned material.
- **Special need**—We need lights for the ROCKZONE. If you have lights on a stand we would like to borrow them for use during the show. Contact Bill or Raynee Randolph at 367-9329.

### Be a Winner By Answering a Few Questions!!!!

Each newsletter (four) leading up to the show contains a question. Answer each question and bring your answers to the Friday night dinner. Those who correctly answer the most (hopefully all four) questions will be entered into a drawing for show gift certificates(\$\$\$) to spend during the show.

**April question:** In 2000 a member of MAGS' was elected to the Lapidary Journal's Hall of Fame. Name that member \_\_\_\_\_ ( if your new to the club ask a club member)

**Note about the January question.** The correct name is Sr. Richard Owens

**Show Will Benefit The Memphis Ronald McDonald House**

## NAME THE MAGS NEWSLETTER

"Timely Treasures", "Lodestone", "In Quarry", "Earth Notes", "The Roadcut", "Rock Room", "MAGS Miner", "Rock Talk", "Mineral Minutes", "The Geode", and "MAGS Explorer" are a few of your name suggestions for the newsletter. Send your suggestions to [rockclub@earthlink.net](mailto:rockclub@earthlink.net) or call Mike at 853-3603 or bring your ideas and/or artwork to the April MAGS meeting. Thanks for all your suggestions thusfar. We'll vote on the names at the May MAGS meeting.

SCIENCE FAIR UPDATE

2002 SCIENCE FAIR WINNERS ANNOUNCED

MIKE BALDWIN—Don Blalock, W.C. McDaniel, and I were fortunate to judge the Earth Sciences projects at the 24th Annual Memphis/Shelby County Elementary Science Fair on March 5, and the 48th Junior/Senior High School Memphis/Shelby County Science and Engineering Fair on March 19.

From more than 20 Earth Sciences projects in the elementary fair, several awards were presented: (1) *Outstanding Achievement in Earth Sciences* was presented to fourth grader Alssya K. for “Crystal Formations”; (2) *Outstanding Achievement in Earth Sciences* to fifth grader Kara R. for

“Soluble Salt Crystals”; (3) *Award of Merit* to fifth graders Eddie and Spencer G. for “Making Sense of the Data Using a Seismograph”; (4) *Award of Merit* to fifth grader Louisa G. for “Rock and Roll!”; and (5) *Award of Merit* to Ms. Billings second grade class for “Fossils”. The Junior/Senior High School *Outstanding Achievement Award* was presented to Amy S. for “Micro Meteors: Tiny Invaders”. *Outstanding Achievement* winners each received \$50.00 to spend at the Rock Show and free admission to the show. *Merit* winners received free admission to the show. All received certificates.



SFMS:

- New Editor 1st Place—86
- New Editor 2nd Place—88, 97
- Certificate of Excellence—89, 90, 91, 92, 93
- Large Bulletin—87 • Art—77, 80, 81, 82, 86
- Original Articles—(4) 85, (6) 87, (2) 89, (2) 90, (5) 91, (3) 92

AFMS:

- New Editor 7th Place—95
- Jr. Article 3rd Place—98

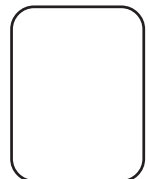
DUES:

- Family—\$20.00
- Single—\$16.00
- Junior—\$8.00
- Associate: \$13.00

The Memphis Archaeological and Geological Society’s main purpose is to promote and advance the knowledge of the Lapidary Sciences in the mining, identification, cutting, polishing and mounting of gems, minerals and fossils to the utmost of our geological and lapidary capabilities.

The MAGS Newsletter is printed on Hammermill Color Copy, 28 lb., Photo White. Typefaces used are Futura and Times New Roman.

MAGS  
2959 Sky Way Drive  
Memphis, TN 38127-7417



MARK YOUR CALENDAR TODAY

Meeting  
**April 12**

MAGS Field Trip  
**April 13**

DMC Field Trip  
**April 27**

The Show  
**April 27-28**

